

MECCANO®

JUNIOR

INITIATION
initiation
INITIATION



1220



1240



363, Avenue de Saint Exupéry
62100 CALAIS-FRANCE

MECCANO®

Made in France by :
Hecho en Francia :
Fabrique en France par :

© Déc. 1995 MECCANO S.A.

MECCANO® is a registered trademark of MECCANO S.A.

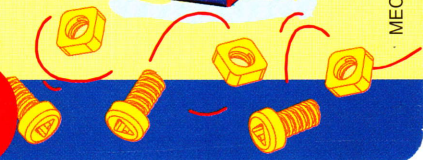
12 / 95

Imp. CACHE 62610 Balinghem

22 1240 104 001



4+



MECCANO®

JUNIOR



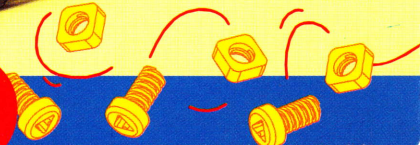
1315



1320

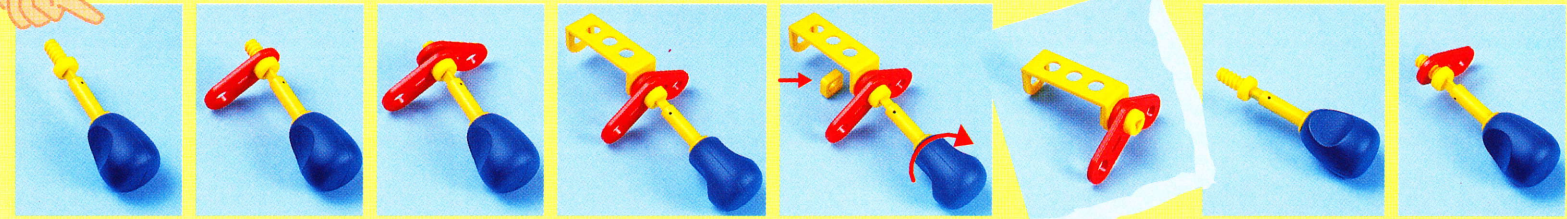


4-7



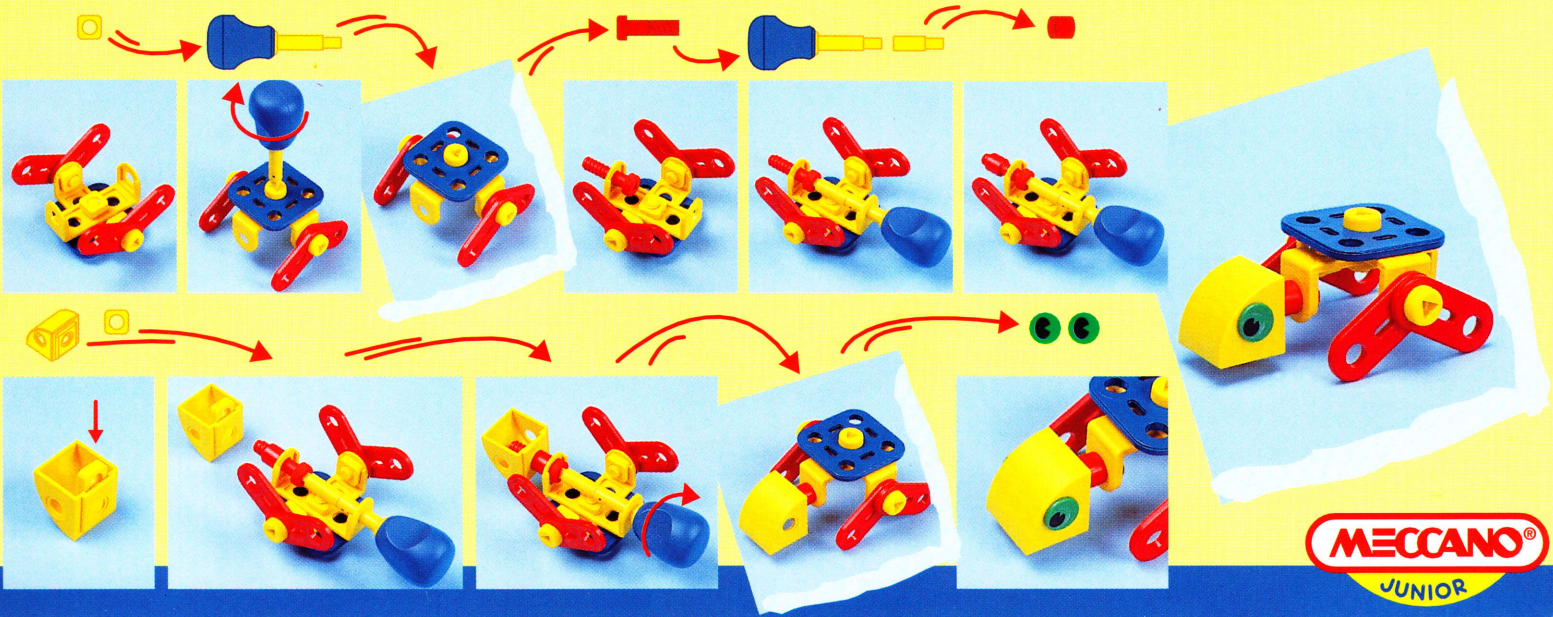


NL : Veel modellen en onderdelen zijn een uniek en origineel ontwerp, hetgeen eigendom van MECCANO S.A. is. Deze modellen genieten bescherming als industrieel ontwerp, handelsmerk en/of copyright in talloze landen. Voor uitgebreide informatie, s.v.p. contact opnemen met MECCANO S.A.
 P : Numerosos modelos e peças são criações originais, propriedade de MECCANO S.A. e são protegidos pelas legislações nacionais segundo os desenhos, os modelos, as marcas e/ou os direitos autorais. Para quaisquer informações, queira contactar:MECCANO S.A.



GR : Πολλά μοντέλα και ανταλλακτικά είναι αυθεντικά, ιδιοκτησία της MECCANO A.E. και προστατεύονται από τις εθνικές νομοθεσίες για τα μοντέλα, τις μάρκες ή τα διπλώματα ευρεσιτεχνίας. Για κάθε πληροφορία παρακαλώ απευθυνθείτε στην MECCANO A.E..

JAP : モデルならびに部品は、その多くがメカノ社所有のオリジナルデザインで、意匠・商標および/または著作権に関する国内法によって保護されています。詳細については、メカノ社 (MECCANO S.A.) までお問い合わせをお願いします。

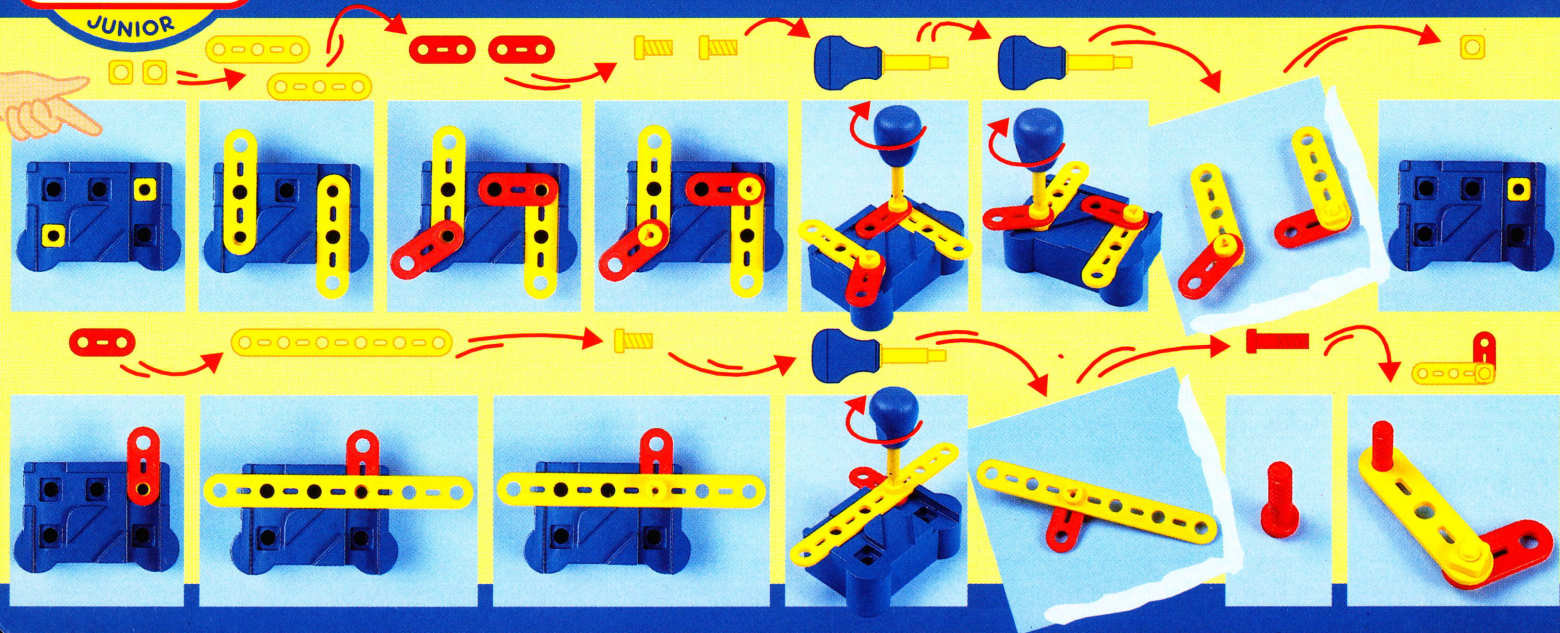


MECCANO®

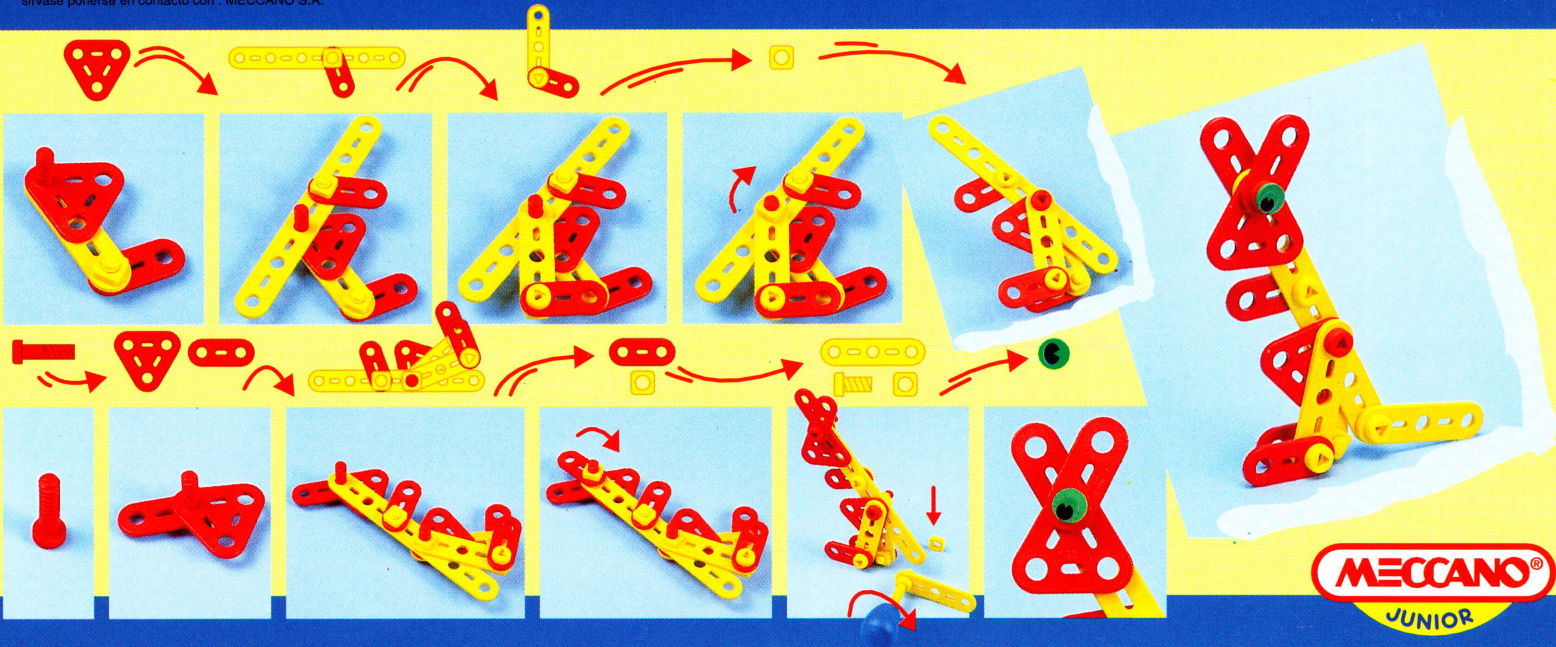
JUNIOR

S : Många modeller och delar bidrar en unik och originell formgivning vilken är MECCANO S.A egendom. Dessa modeller och delar är skyddade genom lagstiftning såsom industriell formgivning, varumärke och/eller upphovsmannrätt i ett flertal länder. För mer detaljerad information, var vänlig och kontakta MECCANO S.A.

SF : Vore mange modeller og dele er originale fremstillinger og ejes af MECCANO S.A. Tegninger, modeller, fabrikmærker og ophavsret er lovbeskyttede i hvert land. Yderligere oplysninger kan fås hos : MECCANO S.A.



DK : Useat mallit ja osat ovat MECCANO S.A.:n omaisuutta olevaa suunnittelua. Useat mallit osat ovat lailla suojattua teollista tuotantoa, tavaramerkkejä ja/tai kopiointioikeuksia useissa maissa. Tuotemerkki MECCANO on MECCANO S.A.:n omaisuutta oleva rekisteröity tavaramerkki, jonka käyttö ilman lupaa on kielletty. Lisätietoja varten, ottakaa yhteyttä MECCANO S.A.
E : Numerosos modelos y piezas son creaciones originales, propiedades de MECCANO S.A. y son protegidos por las legislaciones nacionales en lo que concierne a los dibujos y modelos, marcas y/o derechos de autor. Para cualquier información, sírvase ponerse en contacto con : MECCANO S.A.



MECCANO[®]
JUNIOR



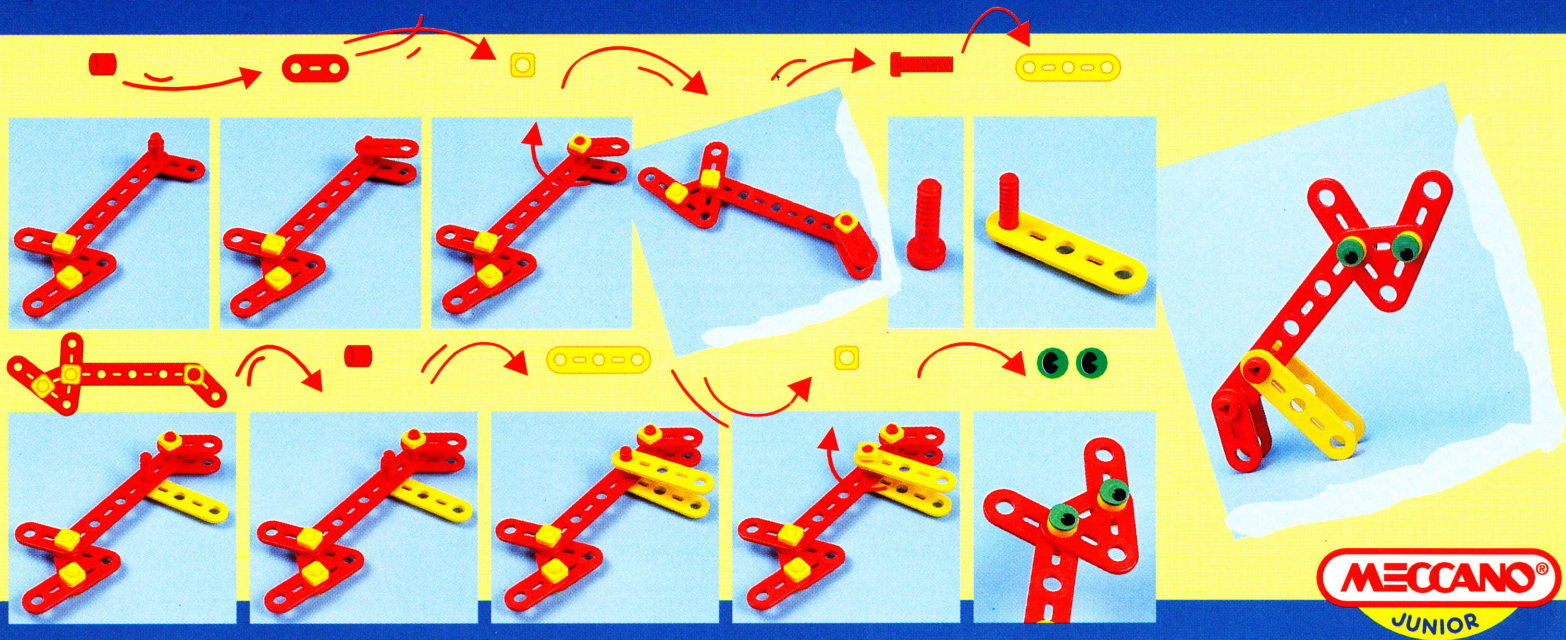
GB : Many of the models and component parts are unique and original designs which are the property of MECCANO S.A. They are protected by national legislation as industrial designs, trademarks and/or copyrights throughout many countries. For detailed information, please contact MECCANO S.A.
 F : De nombreux modèles et pièces sont des créations originales, propriétés de MECCANO S.A. et sont protégés par les législations nationales sur les dessins et modèles, marques et/ou droits d'auteurs. Pour toute information, merci de contacter : MECCANO S.A.

The assembly sequence consists of 24 numbered steps:

- Step 1:** A hand points to a blue base with a yellow square hole.
- Step 2:** A red beam with a hole is attached to the base.
- Step 3:** A red triangular connector is added to the end of the beam.
- Step 4:** A yellow pin is inserted into the triangular connector.
- Step 5:** A blue handle with a yellow pin is attached to the yellow pin.
- Step 6:** A yellow square hole is added to the side of the base.
- Step 7:** A red beam with a hole is attached to the yellow square hole.
- Step 8:** A red beam with a hole is attached to the end of the previous beam.
- Step 9:** A red triangular connector is added to the end of the beam.
- Step 10:** A yellow pin is inserted into the triangular connector.
- Step 11:** A blue handle with a yellow pin is attached to the yellow pin.
- Step 12:** A red beam with a hole is attached to the yellow square hole.
- Step 13:** A red beam with a hole is attached to the end of the previous beam.
- Step 14:** A red triangular connector is added to the end of the beam.
- Step 15:** A yellow pin is inserted into the triangular connector.
- Step 16:** A blue handle with a yellow pin is attached to the yellow pin.
- Step 17:** A red beam with a hole is attached to the yellow square hole.
- Step 18:** A red beam with a hole is attached to the end of the previous beam.
- Step 19:** A red triangular connector is added to the end of the beam.
- Step 20:** A yellow pin is inserted into the triangular connector.
- Step 21:** A blue handle with a yellow pin is attached to the yellow pin.
- Step 22:** A red beam with a hole is attached to the yellow square hole.
- Step 23:** A red beam with a hole is attached to the end of the previous beam.
- Step 24:** A red triangular connector is added to the end of the beam.

D : Zahlreiche Modelle und Teile sind Erfindungen und Eigentum der Firma MECCANO S.A. Sie sind durch Inland-Gesetze über Warenzeichen und Modelle sowie Warenzeichen und/oder Urheberrechte geschützt. Für zusätzliche Auskünfte wenden Sie sich bitte an : MECCANO S.A.

I : Numerosi modelli e pezzi sono creazioni originali, proprietà della MECCANO S.A. e sono protetti dalle legislazioni nazionali sui disegni e modelli, marche e/o diritti d'autore. Per qualsiasi informazione, vogliate prendere contatto con : MECCANO S.A.



MECCANO[®]
JUNIOR

MECCANO®

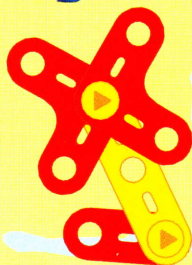
JUNIOR

INITIATION
initiation
INITIATION

PLAY
JOUER
SPIELEN
GIOCCARE
LEKA
LEIKKIÄ
LEGE
JUGAR
SPELEN
BRINCAR
ΠΑΙΖΩ
遊ぶ



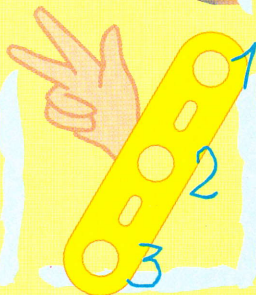
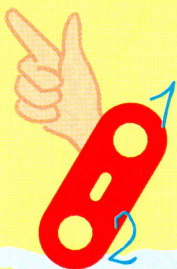
CREATE
CREER
ERSCHAFFEN
CREARE
SKAPA
LUODA
SKABE
CREAR
ONTWERPEN
CRIAR
ΔΗΜΙΟΥΡΓΩ
創作する



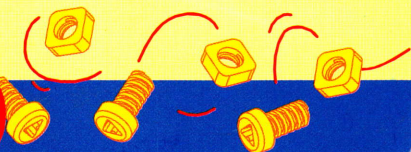
BUILD
CONSTRUIRE
BAUEN
COSTRUIRE
BYEGA
RAKENTAA
PYGGE
CONSTRUIR
MAKEN
CONSTRUIR
ΚΑΤΑΣΚΕΥΑΖΩ
組み立てる



COUNT
COMPTE
ZÄHLEN
CONTARE
RÄKNA
LASKEA
TÆLLE
CONTAR
TELLEN
CONTAR
ΜΕΤΡΩ
数える

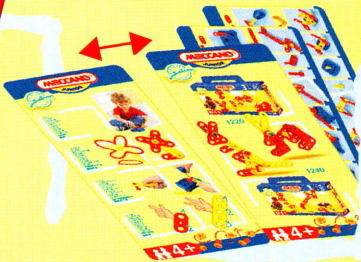
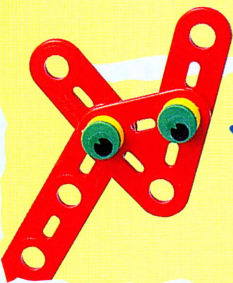
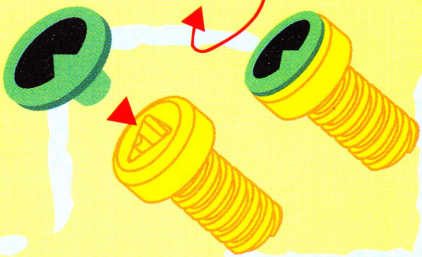
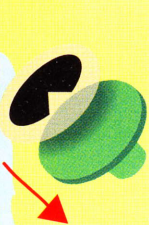
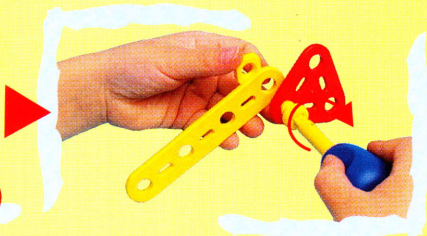
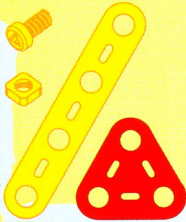
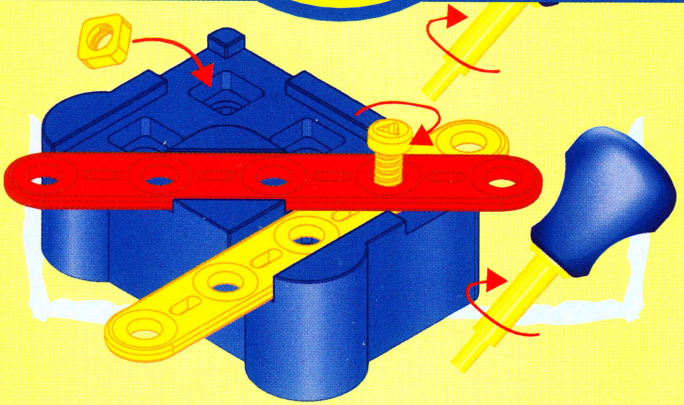


4+



MECCANO®

JUNIOR



4+

