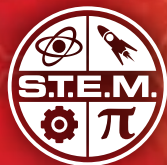


17302



10+

Instructions
Notice de montage
Instrucciones de construcción
Bauanleitung

Bouwinstructie
Istruzioni
Instruções
Инструкции

Instrukcja
Pokyny
Útmutató
Instrucțiuni





CONSTRUCTION TIPS / ASTUCES DE CONSTRUCTION

TIPS DE CONSTRUCCIÓ / TIPPS ZUM BAUEN / MONTAGETIPS / SUGGERIMENTI PER COSTRUIRE
DICAS DE MONTAGEM / РЕКОМЕНДАЦІЇ ПО СБОРКЕ / WSKAZÓWKI BUDOWANIA
KONSTRUKČNÍ TIPY / TIPY NA MONTÁŽ / ÖSSZESZERELÉSI TIPPEK / SFATURI PENTRU CONSTRUIRE

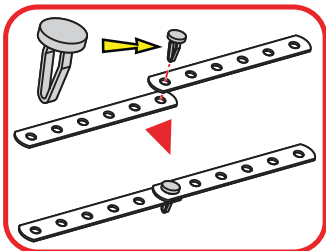
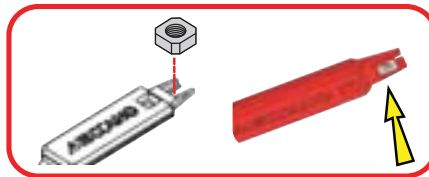
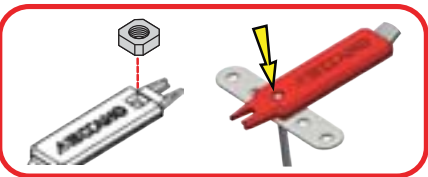
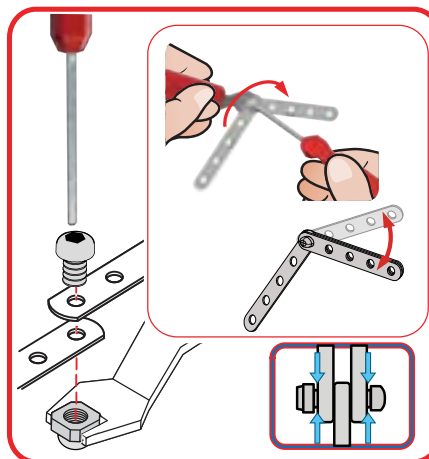
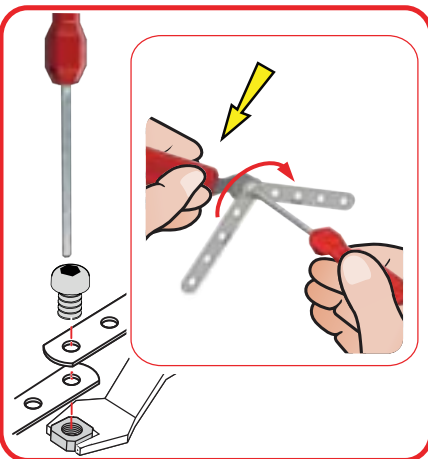
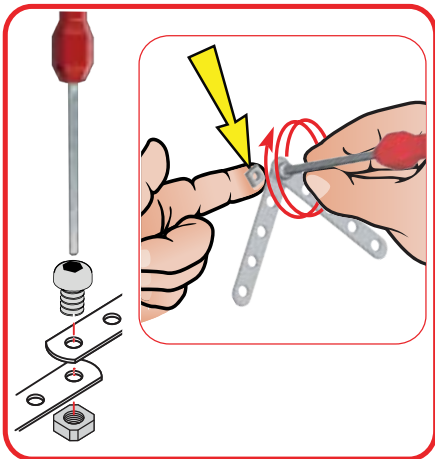


TABLE OF CONTENTS / SOMMAIRE

ÍNDICE / INHALTSVERZEICHNIS / INHOUD / INDICE / СОДЕРЖАНИЕ


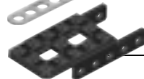


SPIS TREŚCI / OBSAH / TARTALOMJEGYZÉK / CUPRINS



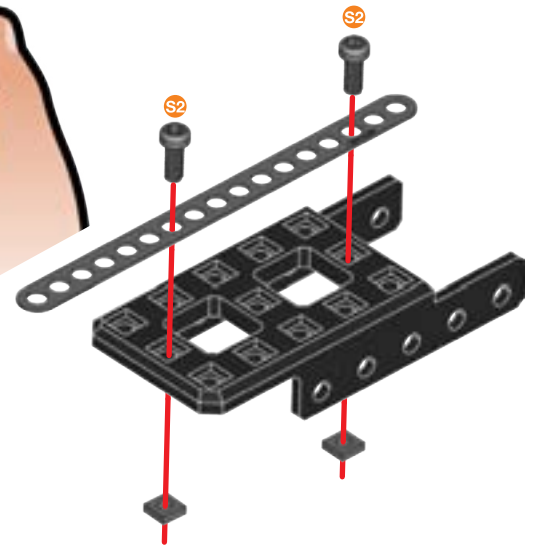
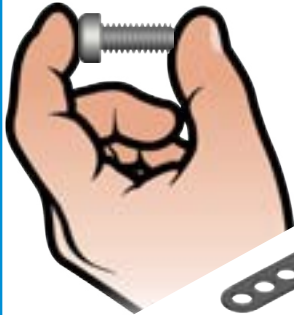
- EN.** Content: 278 parts, 2 real tools, 1 sticker sheet, 1 instruction sheet for 1 model.
FR. Contenu: 278 pièces, 2 vrais outils, 1 feuillet d'autocollants, 1 notice de montage pour 1 modèle.
ES. Contenido: 278 piezas, 2 herramientas reales, 1 hoja de calcomanías, 1 guía de instrucciones para 1 modelo.
DE. Inhalt: 278 Teile, 2 echte Werkzeuge, 1 Bogen mit Aufklebern, 1 Bauanleitung für 1 Modell.
NL. Inhoud: 278 onderdelen, 2 stuks gereedschap, 1 stickervel, 1 bouw instructie voor 1 model.
IT. Contenuto: 278 pezzi, 2 attrezzi, 1 foglio di adesivi, 1 guida per l'uso per 1 modello.
PT. Conteúdo: 278 peças, 2 ferramentas reais, 1 folha de adesivos, 1 folha de instruções para 1 modelo.
RU. В комплекте: 278 деталей, 2 настоящих инструмента, 1 лист с наклейками, 1 инструкция по сборке 1 модели.
PL. Zawartość: 278 elementów, 2 prawdziwe narzędzia, 1 arkusz naklejek, 1 karta z instrukcjami dla 1 modelu.
CZ. Obsah: 278 dílů, 2 skutečné nástroje, 1 list se samolepkami a 1 list s pokyny pro 1 model.
SK. Obsah: 278 dielov, 2 skutočné nástroje, 1 hárok s nálepkami a 1 hárok s pokynmi pre 1 model.
HU. Tartalom: 278 db alkatrész, 2 db valódi szerszám, 1 db matricalap és 1 db 1 modellhez tartozó felhasználói útmutató.
RO. Conținut: 278 de piese, 2 instrumente reale, 1 foaie cu autocolante și 1 fișă cu instrucțiuni pentru 1 model.

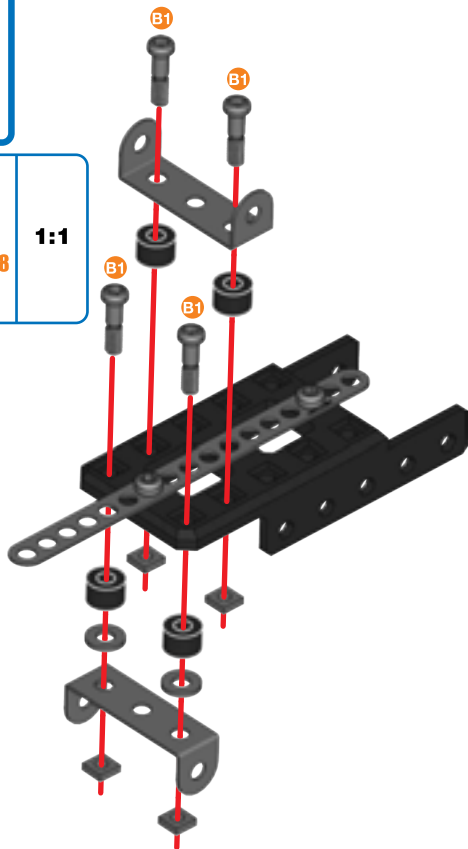
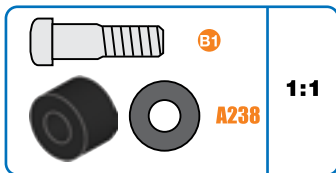
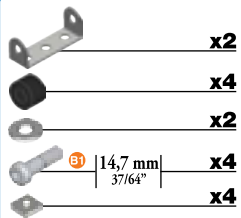
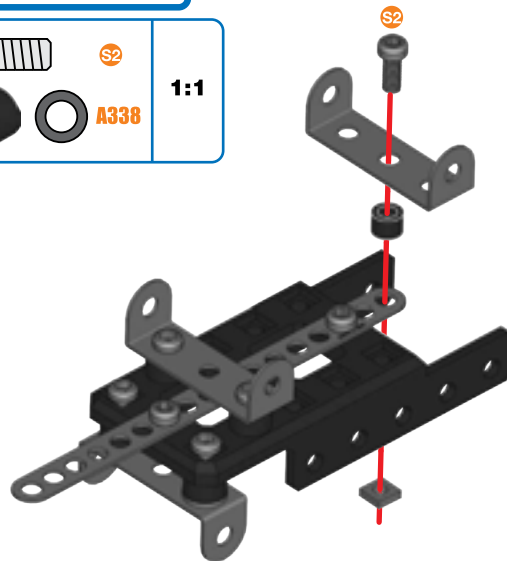
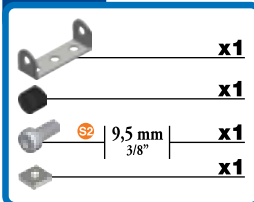


1










-  x1
-  x1
-  9,5 mm | x2
3/8"
-  x2

  1:1



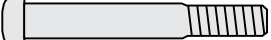

2**3**

4

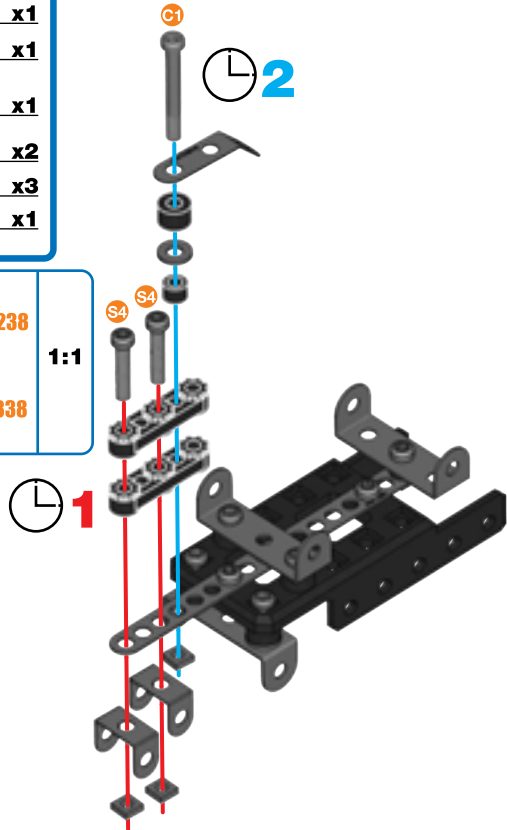
	x2
	x1
	x2
	x1
	x1
	x1
	x2
	x3
	x1









		A238
		A338





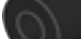

1:1

	C-1
	S4

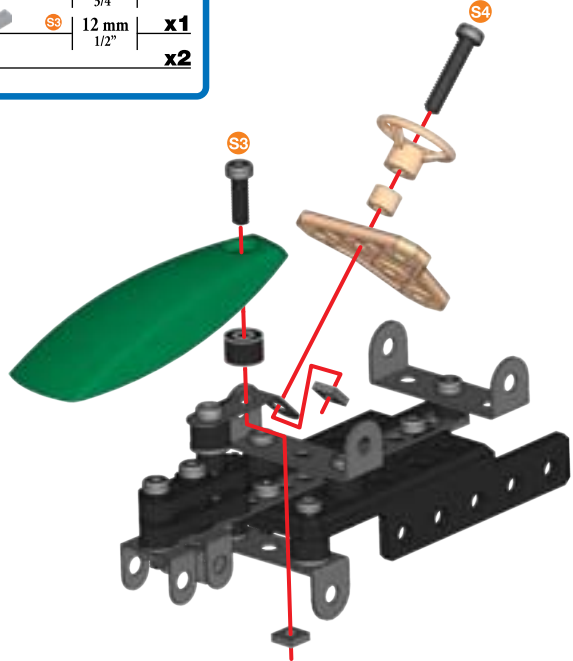
1:1

**5**




	x1
	x1
	x1
	x1
	x1
	x1
	x1
	x2

	S4	
	S3	
		A238
		A338

1:1

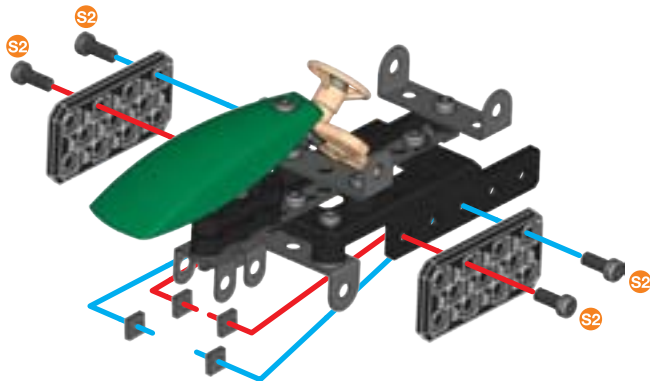








6

	x2
 9,5 mm 3/8"	x4
	x4



S2

1:1**7**

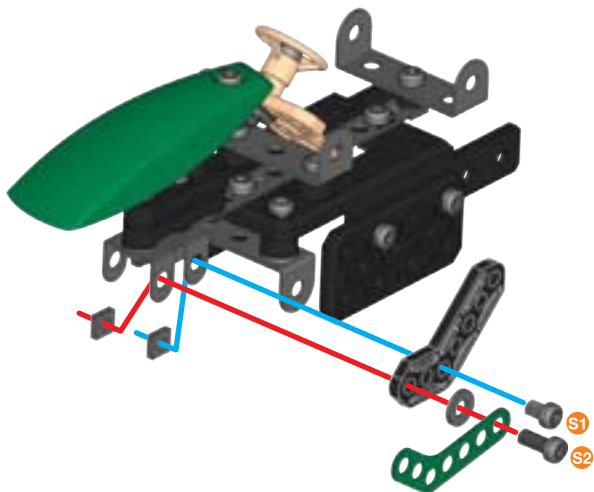
	x1
	x1
 9,5 mm 3/8"	x1
 5,8 mm 15/64"	x1
	x2
	x1









S2

1:1

S1

**8**

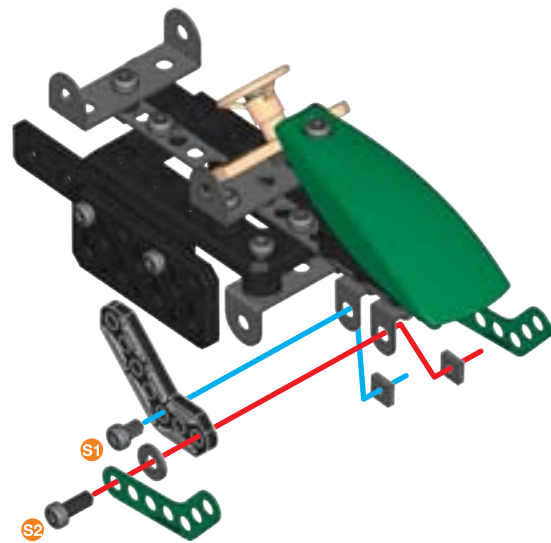
	x1
	x1
 9,5 mm 3/8"	x1
 5,8 mm 15/64"	x1
	x2
	x1



S2

1:1

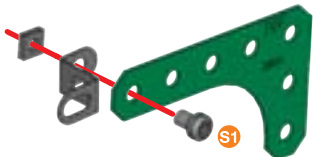
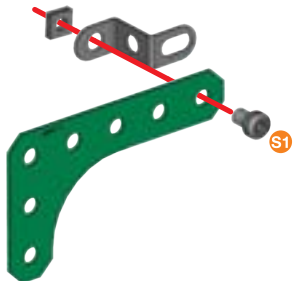
S1



9

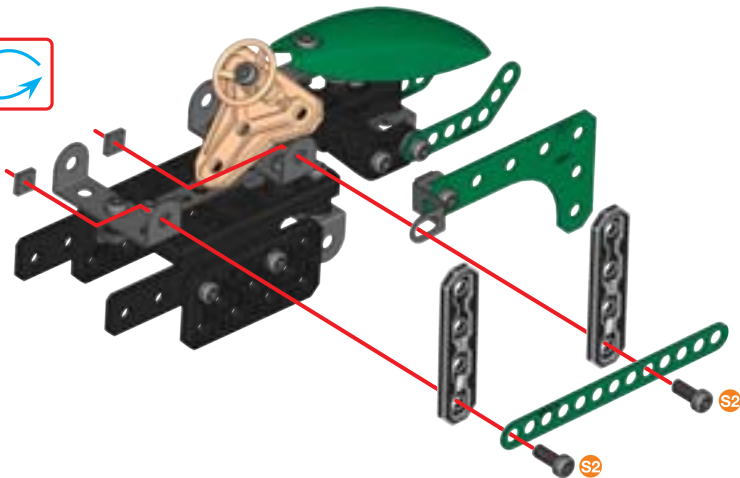
	x2
	x2
5,8 mm 15/64"	x2
	x2

	S1	1:1
--	-----------	------------

**10****(8) + (9) +**

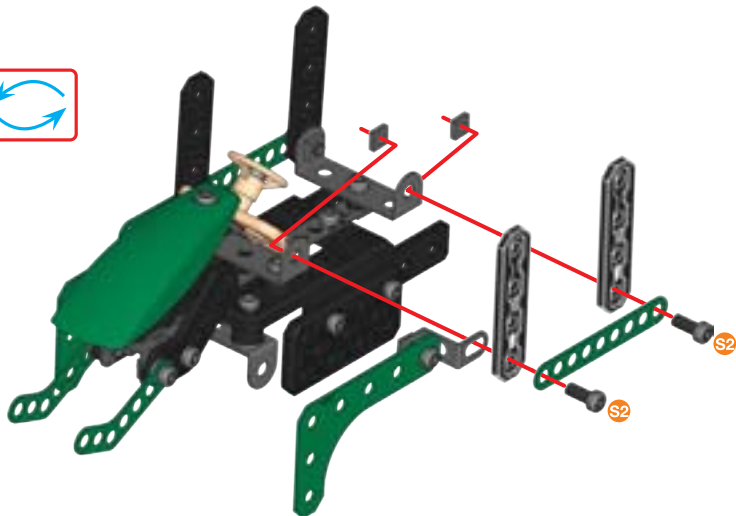
	x1
	x2
9,5 mm 3/8"	x2
	x2

	S2	1:1
--	-----------	------------









**11****(9) + (10) +**





	x1
	x2
9,5 mm 3/8"	x2
	x2

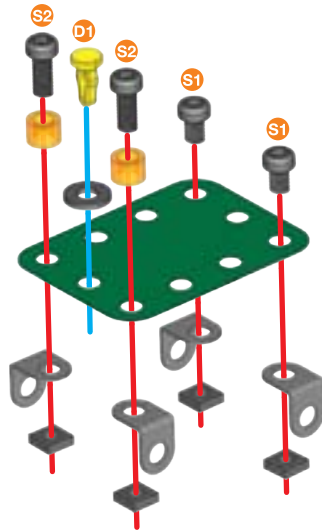
	S2	1:1
--	-----------	------------





12

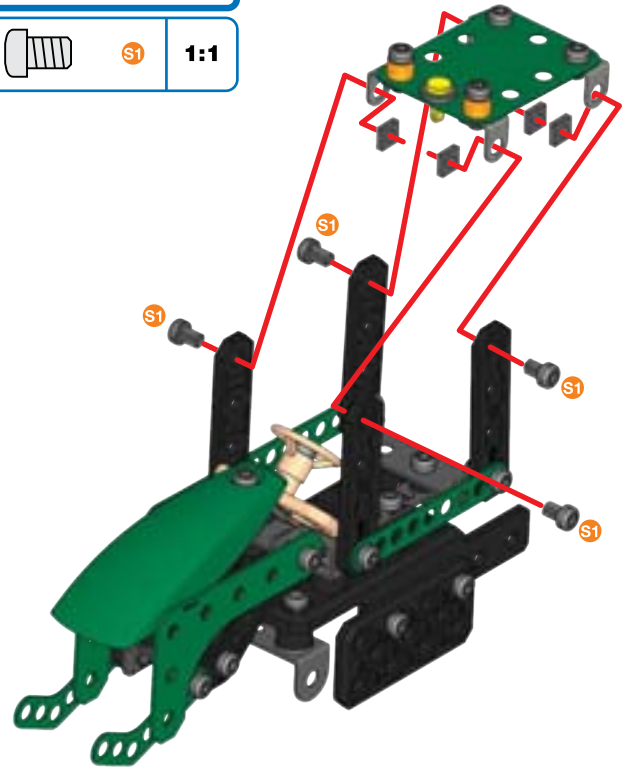
-  **x1**
-  **x4**
-  **x2**
-  9,5 mm $\frac{3}{8}$ " **x2**
-  5,8 mm $\frac{15}{64}$ " **x2**
-  11,25 mm $\frac{7}{16}$ " **x1**
-  **x4**
-  **x1**

	S2	1:1
	S1	
		
	A338	










**13****11 + 12 +**

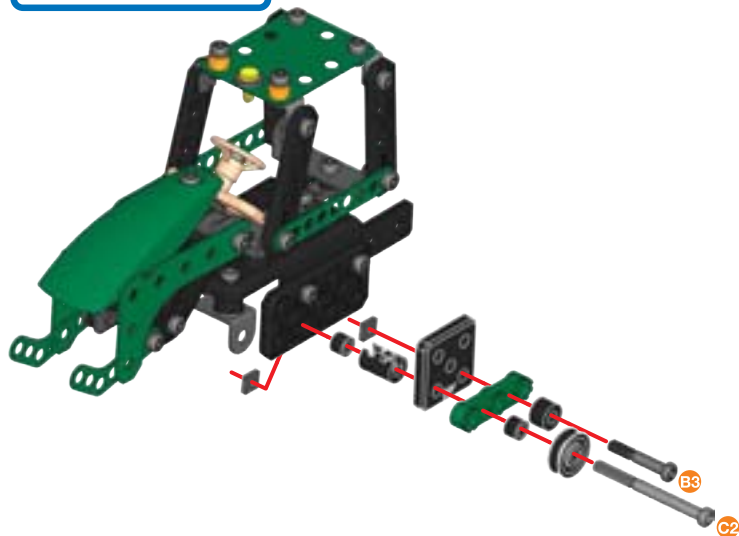
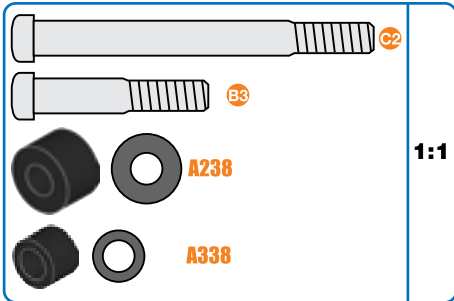
-  5,8 mm $\frac{15}{64}$ " **x4**
-  **x4**










-  **S1** **1:1**

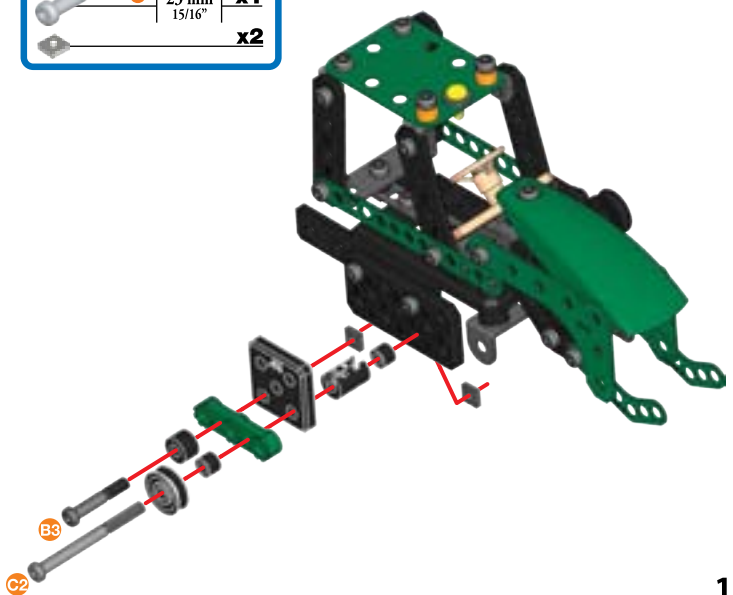
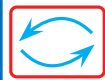
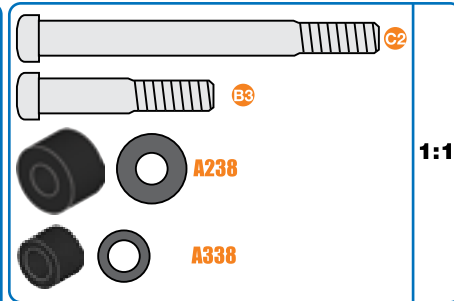


14








-  **x1**
-  **x1**
-  **x1**
-  **x1**
-  **x1**
-  **x2**
-  | 44,5 mm | **x1**
1 3/4"
-  | 23 mm | **x1**
15/16"
-  **x2**

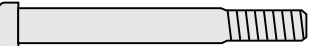


**15**

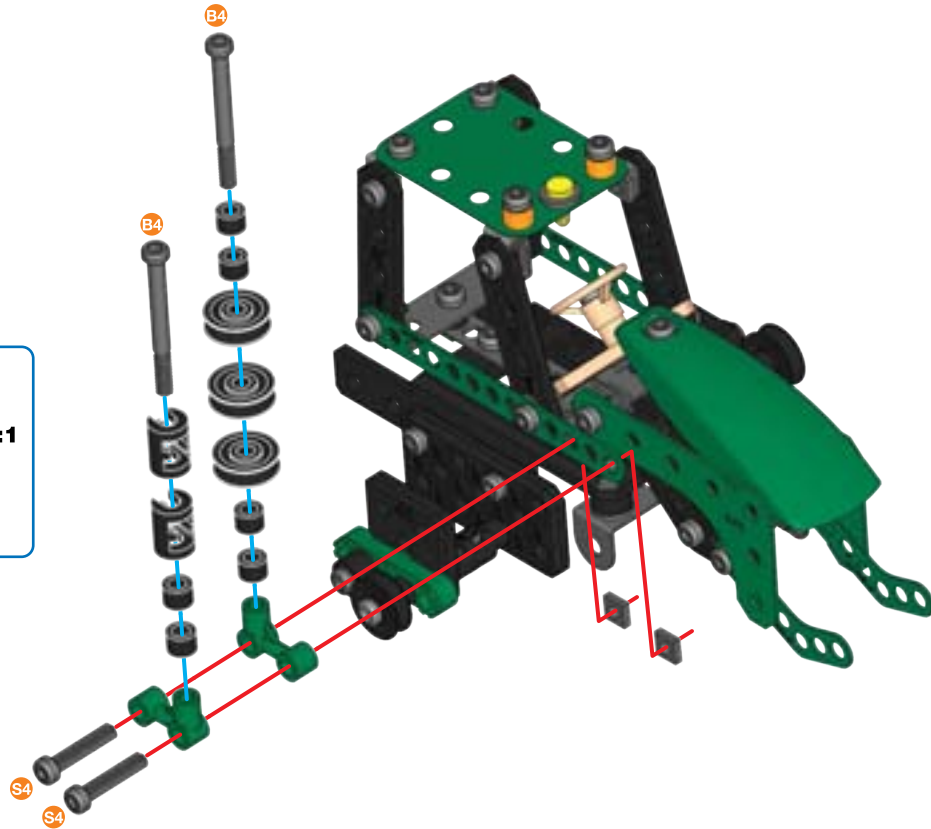
-  **x1**
-  **x1**
-  **x1**
-  **x1**
-  **x1**
-  **x2**
-  | 44,5 mm | **x1**
1 3/4"
-  | 23 mm | **x1**
15/16"
-  **x2**



16

-  **x2**
-  **x2**
-  **x3**
-  **x6**
-  **x2** (B4)
-  **x2** (S4)
-  **x2**

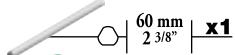
 (B4)	1:1
 (S4)	
 A338	



17



x1



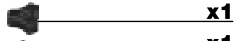
x1



x2



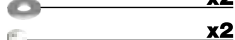
x1



x1



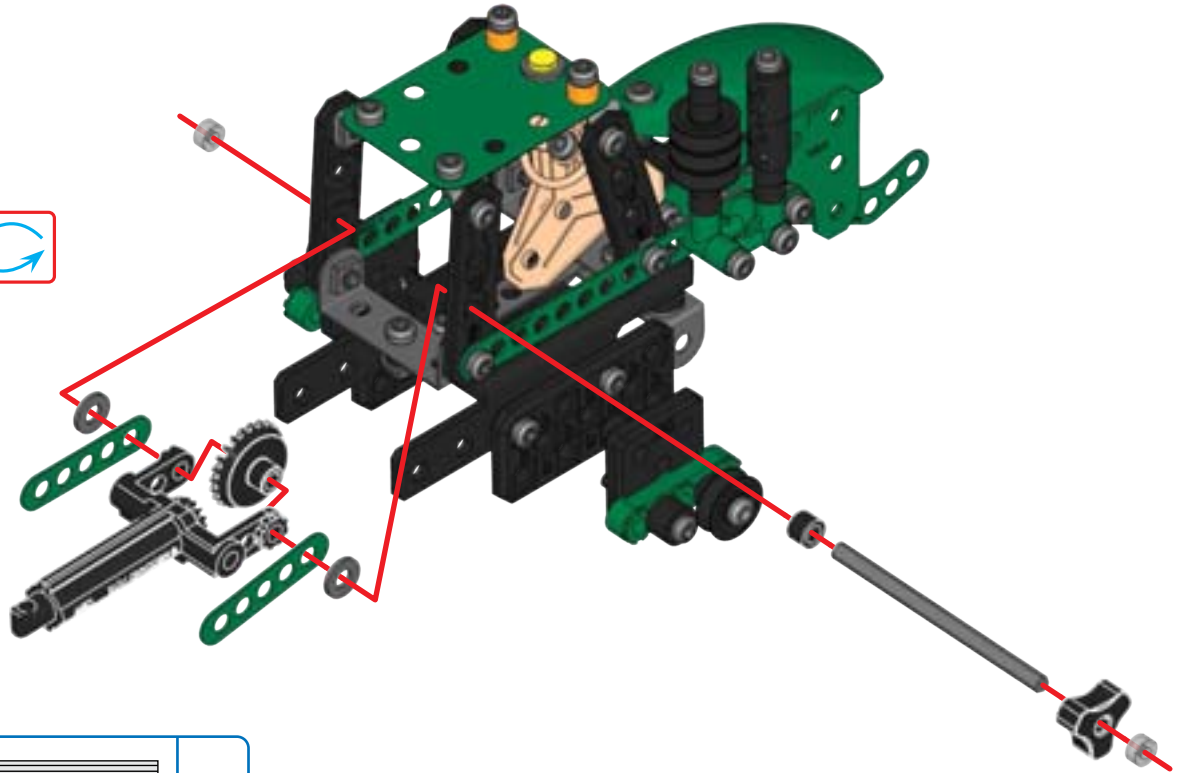
x1



x2






x2



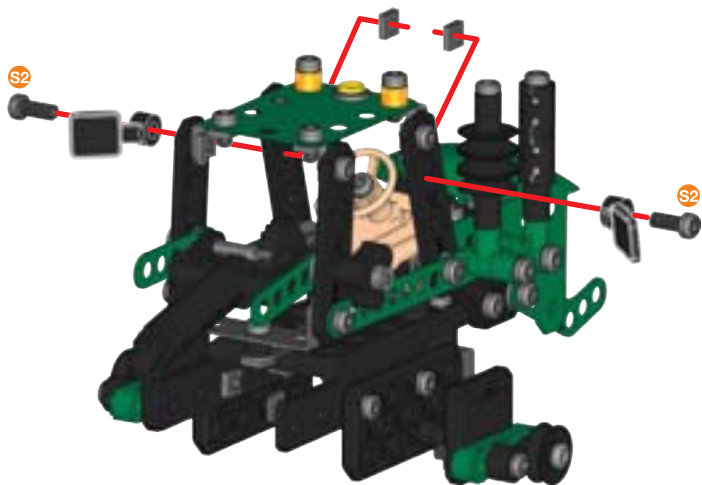
A338




1:1

18

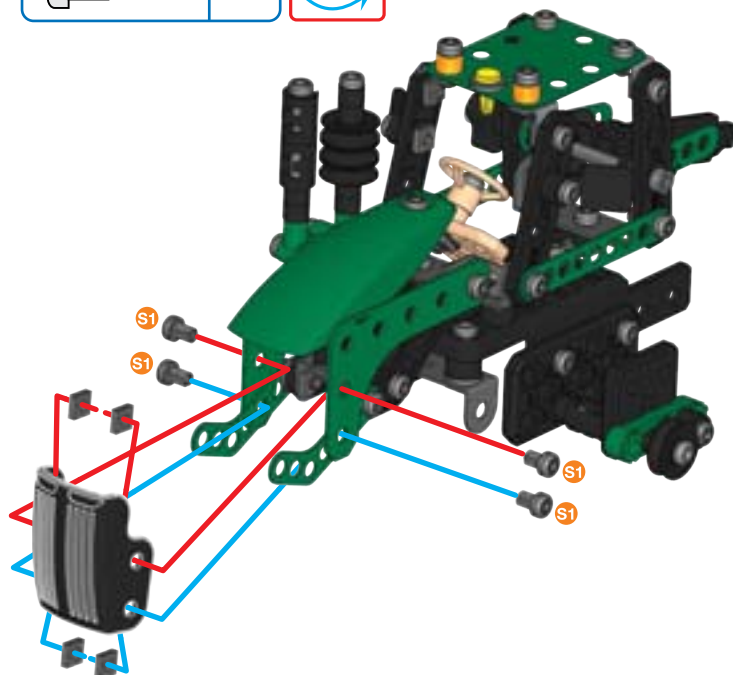
	x2
 S2	9,5 mm x2 3/8"
	x2

 S2	1:1
---	------------

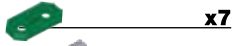
**19**

	x1
 S1	5,8 mm x4 15/64"
	x4

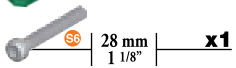
 S1	1:1
--	------------



20

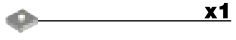


x7



28 mm
1 1/8"

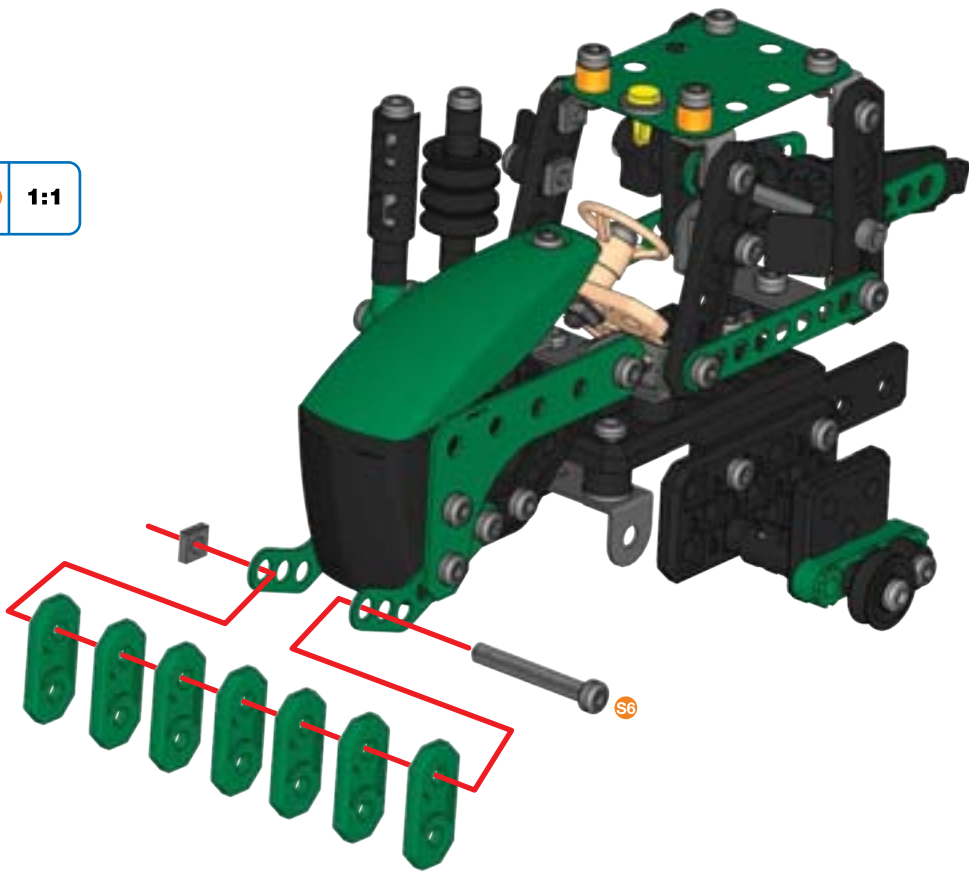
x1

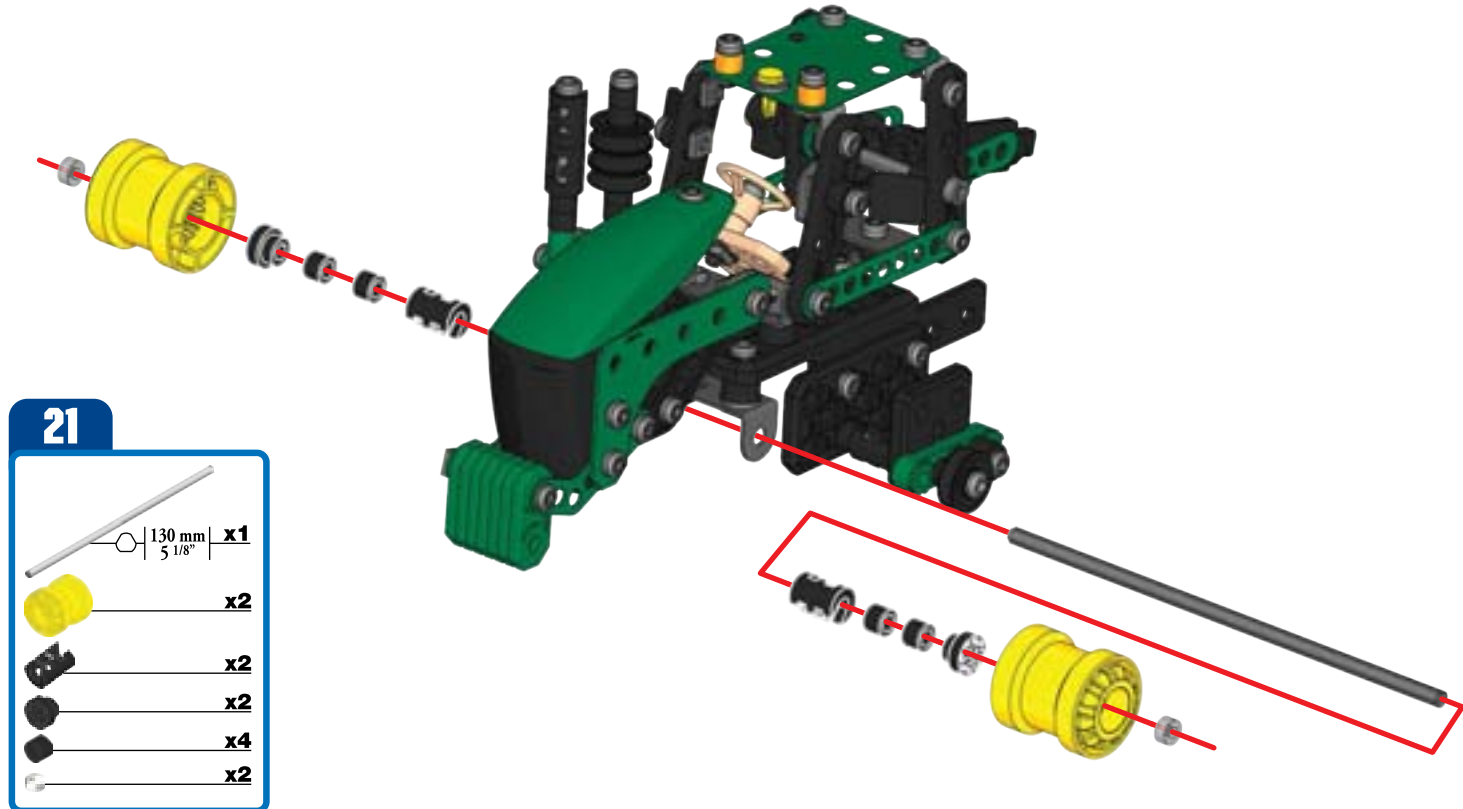


x1

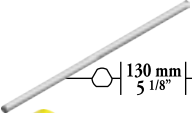







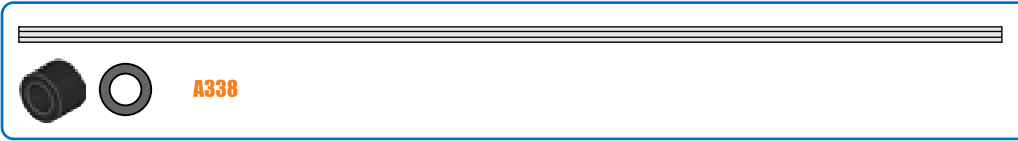
1:1





21

-  130 mm | 5 1/8" | **x1**
-  **x2**
-  **x2**
-  **x2**
-  **x4**
-  **x2**

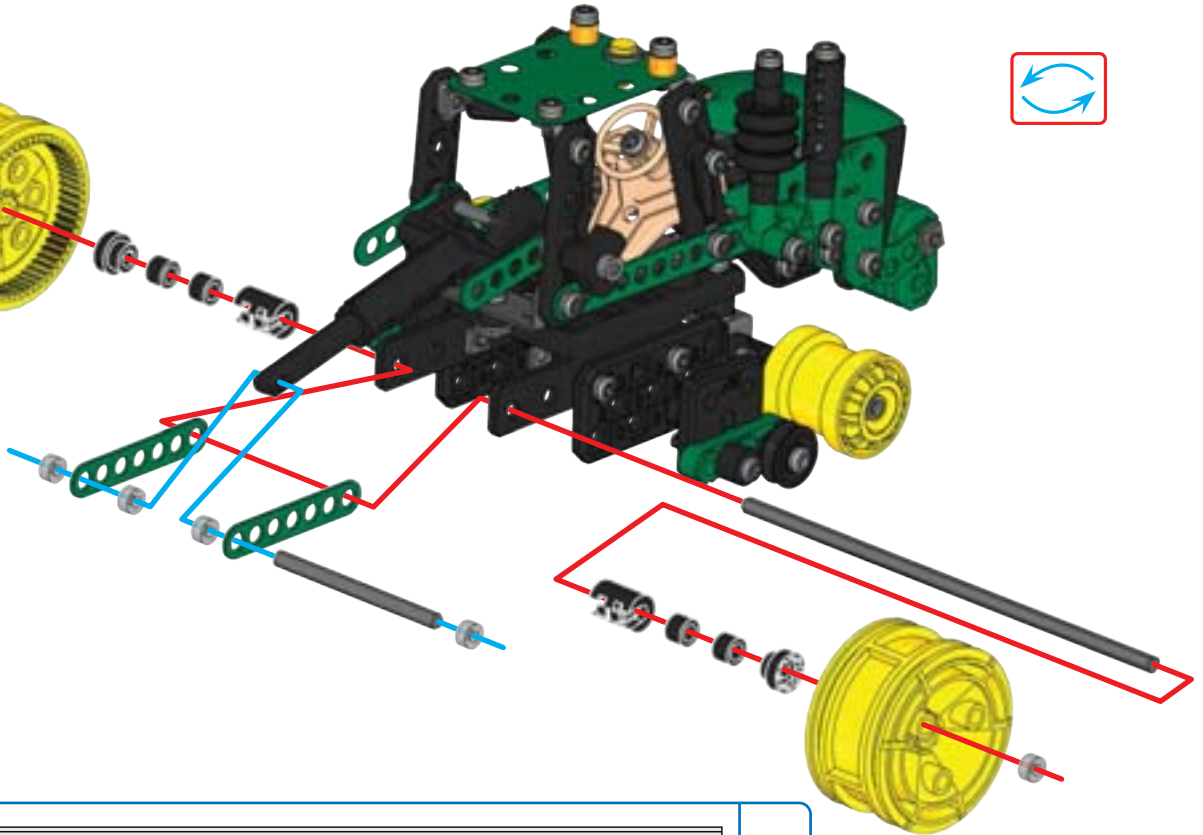


1:1



22




	130 mm	x1
	50 mm	x1
		x2
		x2
		x2
		x2
		x4
		x6

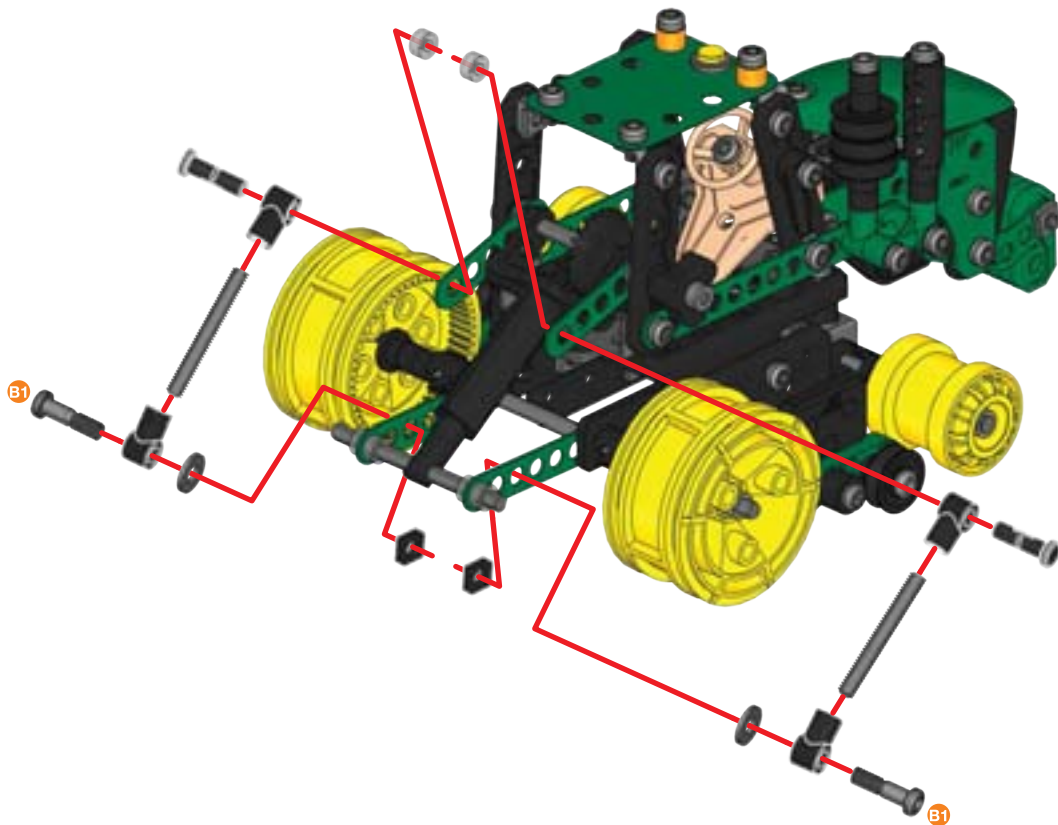


	A338	1:1

23







-  **x2**
-  **x4**
-  **x2**
-  **x2** | 14,7 mm | 37/64"
-  **x2**
-  **x2**
-  **x2**




-  **x1**
-  **1:1**
-  **D277**

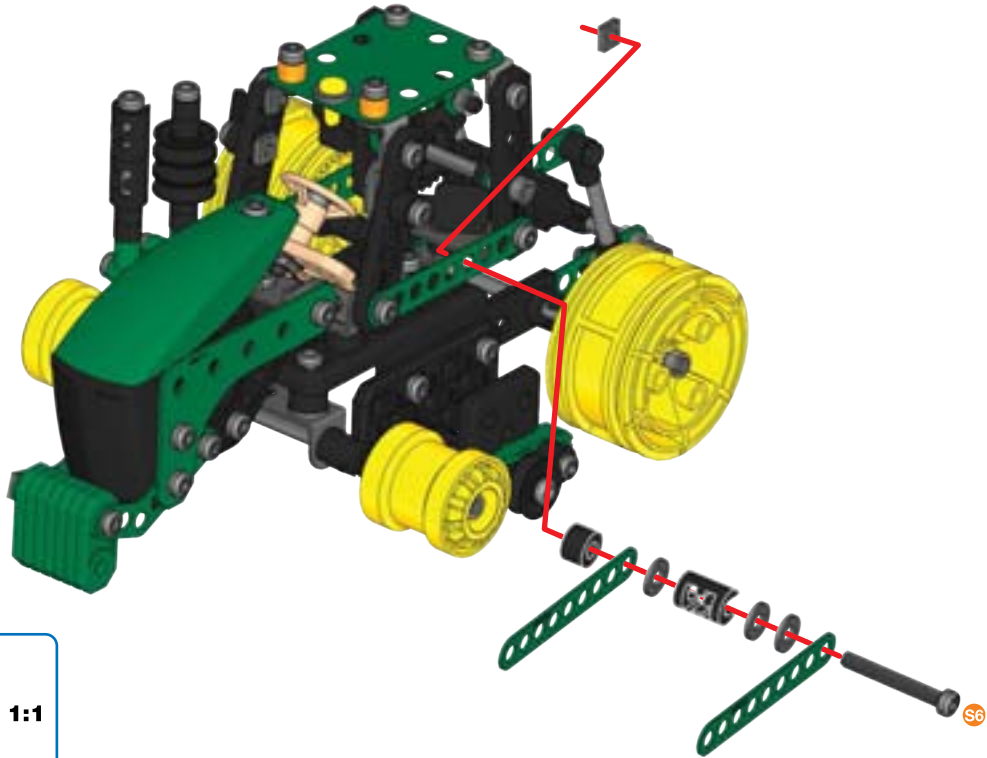









24





-  x2
-  x1
-  x1
-  x1
-  x1
-  x3

-  S6
-   A238
- 1:1

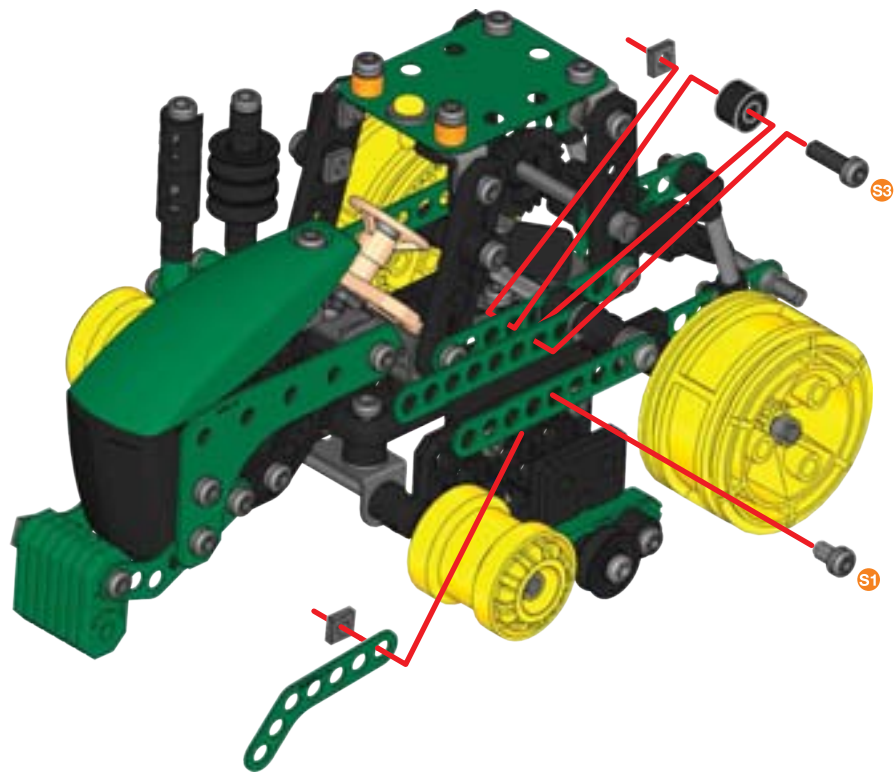


25

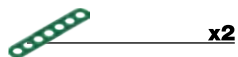
-  x1
-  x1
-  | 12 mm | x1
1/2"
-  | 5,8 mm | x1
15/64"
-  x2

-  S3
-  S1
-   A238

1:1



26



x2



x6



x1



x3



x4



S5

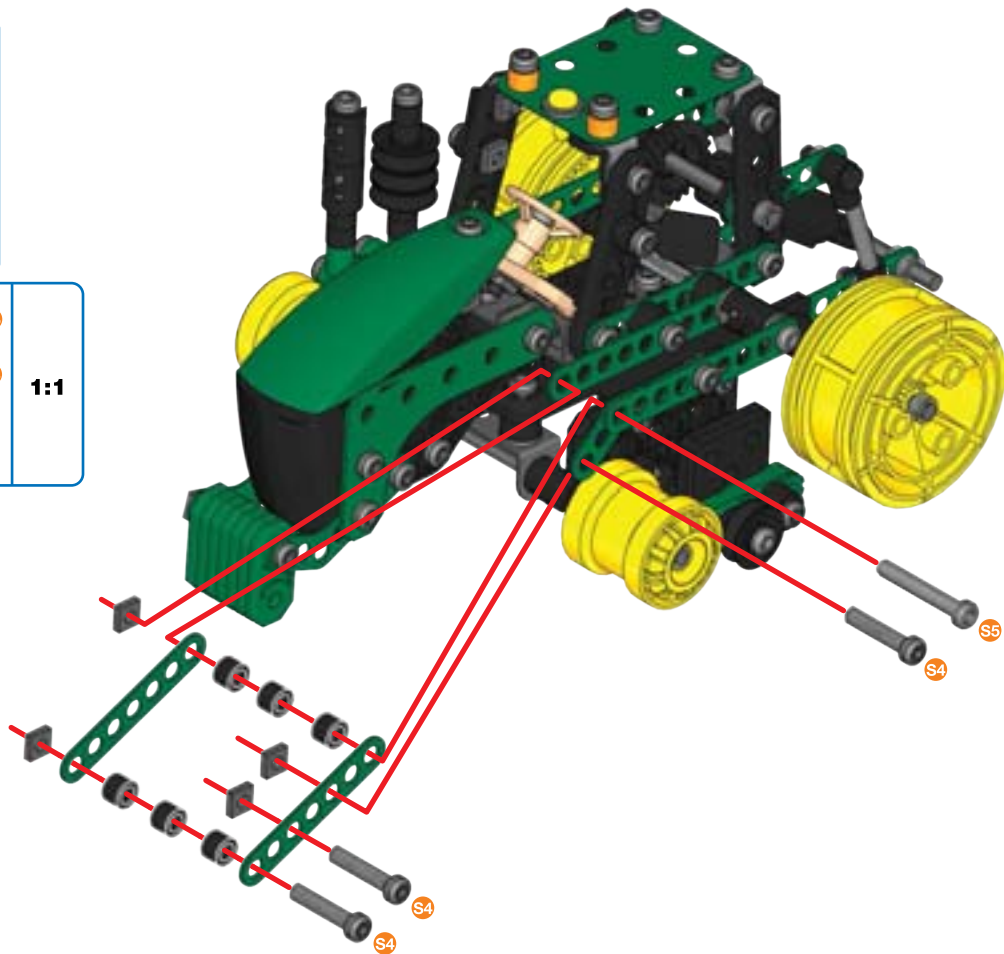


S4

1:1



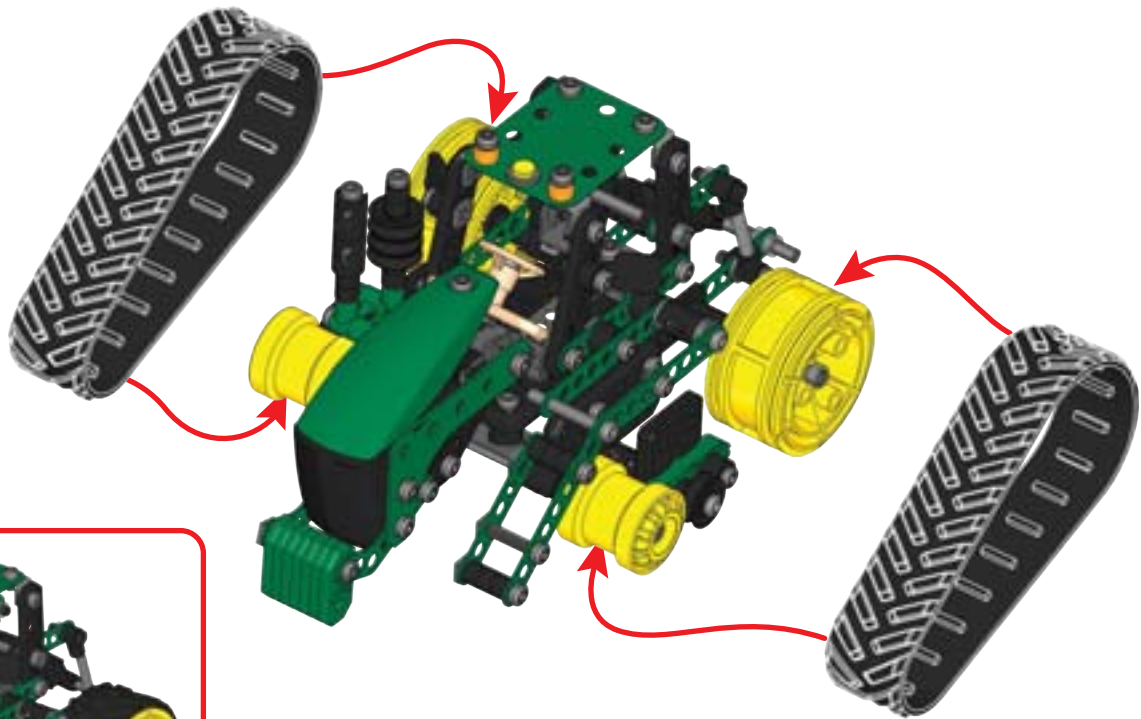
A338



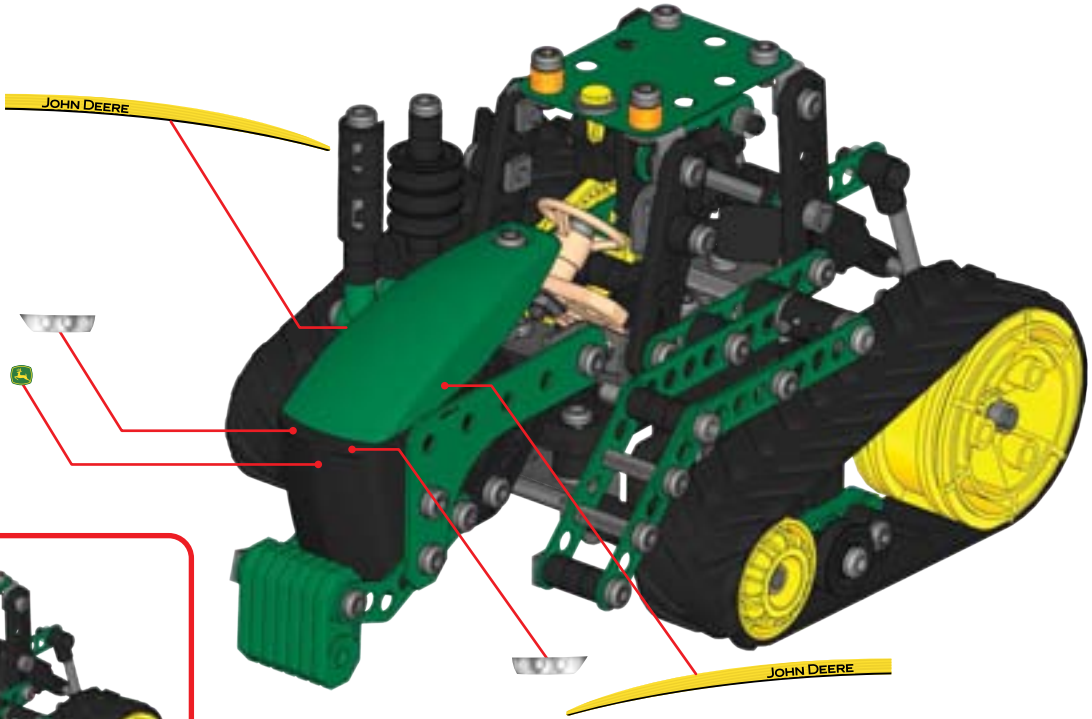
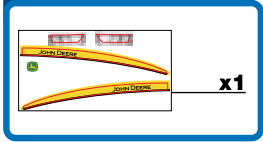
27



x2



28





D396 x2



C999 x1



C899 x1



C109 x1



D324 x2



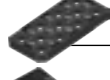
B864 x1



D332 x1



D053 x1



D103 x2



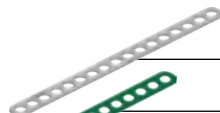
D132 x2



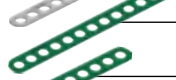
C881 x1



x1



C774 x1



C773 x1



C771 x3



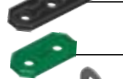
C769 x4



C768 x2



C775 x3



D050 x4



D048 x7



A248 x3



A437 x1



A438 x2



A811 x2



A321 x1



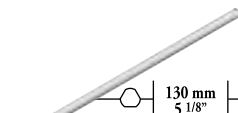
C921 x1



D397 x2



A187 x2



A315 x2



60 mm
2 3/8"

A516 x1



50 mm
2"

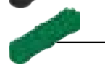
A317 x1



C866 x2



A260 x2



A420 x2



A420 x2



D292 x9



A423 x2



C885 x2



C330 x4



A524 x5



A238 x10



A338 x27



A338 x1

A338 x2

A259 x12



C2

44,5 mm
1 3/4"

C379 x2



B4

38,1 mm
1 1/2"

B696 x2



C1

32 mm
1 1/4"

C935 x1



S6

28 mm
1 1/8"

A611 x2



S5

25,4 mm
1"

A912 x1



B3

23 mm
15/16"

A347 x2



S4

19 mm
3/4"

A911 x8



B1

14,7 mm
3/7164"

A247 x6



S3

12 mm
1/2"

A411 x2



S2

9,5 mm
3/8"

A511 x17



S1

5,8 mm
15/64"

A637 x15



D1

11,25 mm
7/16"

D005 x1



A421 x2



A337 x54



D277 x2



A198 x13

A444 x4

C863 x4

C994 x1

D499 x1

EN Remove all packaging before use. Retain this information, addresses and phone numbers for future reference. Content may vary from pictures. Meccano reserves the right to discontinue the website www.meccano.com at any time. An adult should periodically check this toy to ensure no damage or hazards exist, if so, remove from use. Children should be supervised during play.

FR Retirer tout l'emballage avant utilisation. Conserver les informations, adresses et numéros de téléphone pour consultation ultérieure. Le contenu peut différer des images. Meccano se réserve le droit de supprimer le site Internet www.meccano.com à tout moment. Un adulte doit régulièrement examiner ce jouet afin de s'assurer qu'il ne présente pas de dommage ni de risque. En cas de problème, ne plus l'utiliser. Les enfants doivent être surveillés lorsqu'ils jouent.

ES Retire todo el embalaje antes de utilizar el producto. Conserve toda la información, las direcciones y los números de teléfono para futuras referencias. El contenido del paquete puede no corresponder con las imágenes. Un adulto debe revisar de forma periódica el juguete para asegurarse de que no supone un riesgo para el niño; si así fuera el caso, interrumpa su uso. Supervise a los niños mientras juegan con el producto.

DE Entfernen Sie vor der Benutzung sämtliche Verpackungsmaterialien. Alle Informationen, Adressen und Telefonnummern bitte für mögliche Rückfragen aufbewahren. Der Packungsinhalt kann von den Bildern abweichen. Ein Erwachsener sollte regelmäßig sicherstellen, dass das Spielzeug keine Gefahr darstellt, und es gegebenenfalls entfernen. Kinder sollten beim Spielen beaufsichtigt werden.

NL Verwijder de verpakking voor gebruik. Bewaar deze informatie, adressen en telefoonnummers voor toekomstig gebruik. Inhoud kan afwijken van illustraties. Een volwassene dient dit speelgoed regelmatig te controleren. In geval van schade of gevaaren het speelgoed niet meer gebruiken. Houd toezicht als kinderen spelen.

IT Rimuovere l'imballo prima dell'uso. Conservare informazioni, indirizzi e numeri di telefono per riferimento futuro. Il prodotto potrebbe essere differente dalle immagini. Il giocattolo deve essere periodicamente controllato da un adulto per prevenire eventuali danni o rischi; in caso di danno, sospendere l'uso. I bambini devono essere sorvegliati durante il gioco.

PT Remova totalmente a embalagem antes de utilizar. Guarde todos os endereços, números de telefone e demais informações para consulta e referência. O conteúdo poderá ser diferente das ilustrações. Um adulto deve verificar o brinquedo periodicamente para garantir que não há danos ou riscos. Se houver, é necessário que o brinquedo seja retirado de uso. As crianças devem ser supervisionadas enquanto brincam.

RU Снимите все упаковочные материалы перед использованием. Запишите указанные на упаковке адреса и номера телефонов, чтобы у вас была возможность связаться с нами. Содержимое упаковки может отличаться от иллюстраций. Взрослым следует время от времени проверять игру и следить за тем, чтобы она не была сломана и не представляла опасности для ребенка. В противном случае ее не следует использовать. Во время игры дети должны находиться под присмотром.

PL Przed użyciem wyjąć zabawkę z opakowania. Zachować niniejsze informacje, adresy i numery telefonów na wypadek, gdyby były potrzebne w przyszłości. Zawartość opakowania może różnić się od zabawki przedstawionej na obrazkach. Osoba dorosła powinna regularnie sprawdzać zabawkę pod kątem uszkodzeń oraz zagrożeń. Jeśli takowe wystąpią, należy zaprzestać używania zabawki. Dzieci nie powinny bawić się bez nadzoru.

CZ Před použitím odstraňte veškeré balící materiály. Uložte si tyto informace, adresy a telefonní čísla pro budoucí použití. Obsah se může lišit od obrázků. Dospělá osoba by měla pravidelně kontrolovat, zda hračka není poškozená nebo zda nepředstavuje nebezpečí. Pokud ano, hračku vyhodte. Během hry nenechávejte děti bez dozoru.

SK Pred použitím odstráňte všetok obalový materiál. Tieto informácie, adresy a telefonné čísla si uchovajte na ďalšie použitie. Obsah sa môže líšiť od zobrazenia. Túto hračku musí pravidelne kontrolovať dospelá osoba, aby sa uistila, že nedošlo k jej poškodeniu a že nehrozí žiadne nebezpečenstvo. Oko, ako, ukončíte jej používanie. Deti nesmú byť pri hre bez dozoru.

HU Használat előtt távolítsd el minden csomagolóanyagot. A tudnivalókat, a címet és a telefonszámot őrizze meg későbbi használatra. A csomag tartalma eltérhet a képen látottaktól. A felnőtteknek rendszeresen ellenőrizniük kell, hogy a játékban nincs-e sérülés, illetve nem jelent-e veszélyforrást. Ha igen, ki kell vonni a használatból. A gyermekek játék közben felügyeletet igényelnek.

RO Îndepărtați toate ambalajele înainte de utilizare. Păstrați aceste informații, adresele și numerele de telefon pentru consultare ulterioară. Conținutul poate fi diferit de imaginea din fotografii. Această jucărie trebuie verificată periodic de un adult pentru a se asigura că nu există nicio deteriorare sau niciun pericol; dacă există, scoateți jucăria din uz. Copiii trebuie supravegheați în timp ce se joacă.

TM & © 2017 MECCANO for packaging, instructions and models built with this set. ® MECCANO is an exclusive trademark of MECCANO. Spin Master logo is a trademark of Spin Master Ltd. All rights reserved. / TM & © 2017 MECCANO pour l'emballage, les notices et modèles de ce coffret. ® MECCANO est une marque de commerce exclusive de MECCANO. Le logo de Spin Master est une marque de commerce de Spin Master Ltd. Tous droits réservés.



©2017 Deere & Company. John Deere's green and yellow color scheme, the leaping deer symbol, and JOHN DEERE are trademarks of Deere & Company. All rights reserved. / Le code couleur jaune et vert John Deere, son symbole du cerf bondissant et JOHN DEERE sont des marques déposées de Deere & Company. Tous droits réservés.

Meets CPSC Safety Requirements.
Conforme aux exigences de sécurité de la CPSC.
Cumple con las normas de seguridad de la CPSC.

SPIN MASTER LTD., 450 FRONT STREET WEST, TORONTO, ON M5V 1B6 CANADA.
Imported into EU by/Importé dans l'UE par: SPIN MASTER INTERNATIONAL, S.A.R.L.,
20 RUE DES PEUPLIERS, L-2328, LUXEMBOURG
www.spinmaster.com



Made in China / Fabriqué en Chine / Hecho en China
T91837_0018_20090443_GML_ISW_R1 (MEC_Jd_Tractor_CN)



UK – 0800 206 1191, serviceuk@spinmaster.com
IRELAND – 1800 992 249
FRANCE – 0800 909 150, servicefr@spinmaster.com
AUSTRALIA – 1800 316 982, customercare@spinmaster.com
DEUTSCHLAND – 08000 0101 0222, Kundenservice@spinmaster.com
SCHWEIZ – 0800 561 350 • ÖSTERREICH – 0800 297 267
NEDERLAND – 0800 022 3683, klantenservice@spinmaster.com
BELGIË/BELGIQUE – 0800 77 688 • LUXEMBOURG – 800 2 8044

ITALIA – 800 788 532, servizio@spinmaster.com
MEXICO – 55 4160 7947, servicio@spinmaster.com
POLSKA – 800080238, poland@spinmaster.com
ČESKÁ REPUBLIKA – 800550530, czechrepublic@spinmaster.com
SLOVENSKO – 0800232800, slovakia@spinmaster.com
MAGYARORSZÁG – 080 100 052, hungary@spinmaster.com
ROMÂNIA – 0800400015, romania@spinmaster.com