



- Ⓜ Merci d'imprimer à échelle 1 sans les marges de l'imprimante.
- Ⓜ Please print at scale 1 without the printer margins.
- Ⓜ Den Maßstab 1 bitte randlos drucken.
- Ⓜ Stampare la scala 1 senza i margini della stampante.
- Ⓜ Imprimir a escala 1 sin los márgenes de la impresora.
- Ⓜ É favor imprimir escala 1 sem as margens da impressora.
- Ⓜ Skriv ut i skala 1 utan skrivarens marginaler.
- Ⓜ Portaiden painatuksen jälkeen reunat eivät saa näkyä.
- Ⓜ Udskriv venligst i målestoksforhold 1 uden printermargener.
- Ⓜ É favor imprimir escala 1 sem as margens da impressora.
- Ⓜ Σας παρακαλώ τυπώστε την κλίμακα 1 μέσα στα περιθώρια του εκτυπωτή.
- Ⓜ Пожалуйста, печатайте в масштабе 1:1 без отступов от края.



Instructions
Notice de montage
Instrucciones de construcción
Bauanleitung
Bouwinstructie
Istruzioni
Instruções
Οδηγίες
Instruktioner
Monteringsinstruktioner
Ohjeet
Инструкция



TABLE OF CONTENTS/SOMMAIRE

ÍNDICE/INHALTSVERZEICHNIS/INHOUD/INDICE/ΠΙΝΑΚΑΣ ΠΕΡΙΕΧΟΜΕΝΩΝ/
INNEHÅLLSFÖRTECKNING/INDHOLDSFORTEGNELSE/SISÄLLYSLUETTELO/СОДЕРЖАНИЕ



- GB Content: 209 parts, 2 real tools, 1 sticker sheet and 1 instruction sheet for model#1.
- F Contenu : 209 pièces, 2 vrais outils, 1 feuillet d'autocollants et 1 notice de montage pour le modèle 1.
- E Contenido: 209 piezas, 2 herramientas reales, 1 hoja de calcomanías y 1 guía de instrucciones para el modelo 1.
- D Inhalt: 209 Teile, 2 echte Werkzeuge, 1 Bogen mit Aufklebern und 1 Bauanleitung für Modell Nr. 1.
- NL Inhoud: 209 onderdelen, 2 stuks gereedschap, 1 stickervel en 1 bouw instructie voor model 1.
- PT Contenido: 209 peças, 2 ferramentas reais, 1 cartela de adesivos e 1 folha de instruções para o modelo 1.
- GR Περιεχόμενα : 209 κομμάτια, 2 πραγματικά εργαλεία, 1 φύλλο αυτοκόλλητο εργαλεία 1 φυλλάδιο οδηγιών για το μοντέλο#1.
- SV Innehåll: 209 delar, 2 riktiga verktyg, 1 klistermärken täcker och 1 instruktionsblad för modell#1.
- DK Indhold: 209 dele, 2 rigtige værktøjer, 1 klistermærke ark og 1 instruktionsark til model#1.
- FI Sisältö: 209 osaa, 2 aidot työkalut, 1 tarra-arkki ja 1 rakennusohje mallia 1 varten.
- R В коробке: 209 деталей, 2 настоящих инструмента, 1 лист с наклейками и 1 инструкция по сборке модели №1.

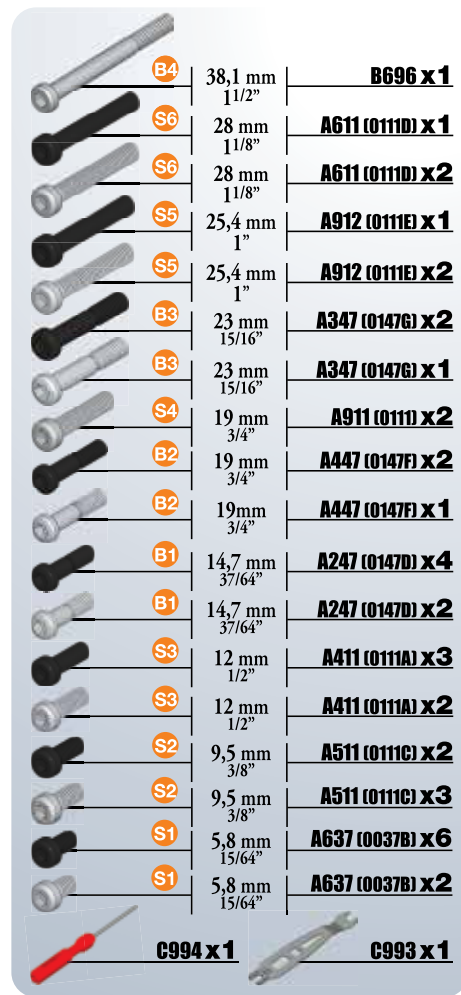
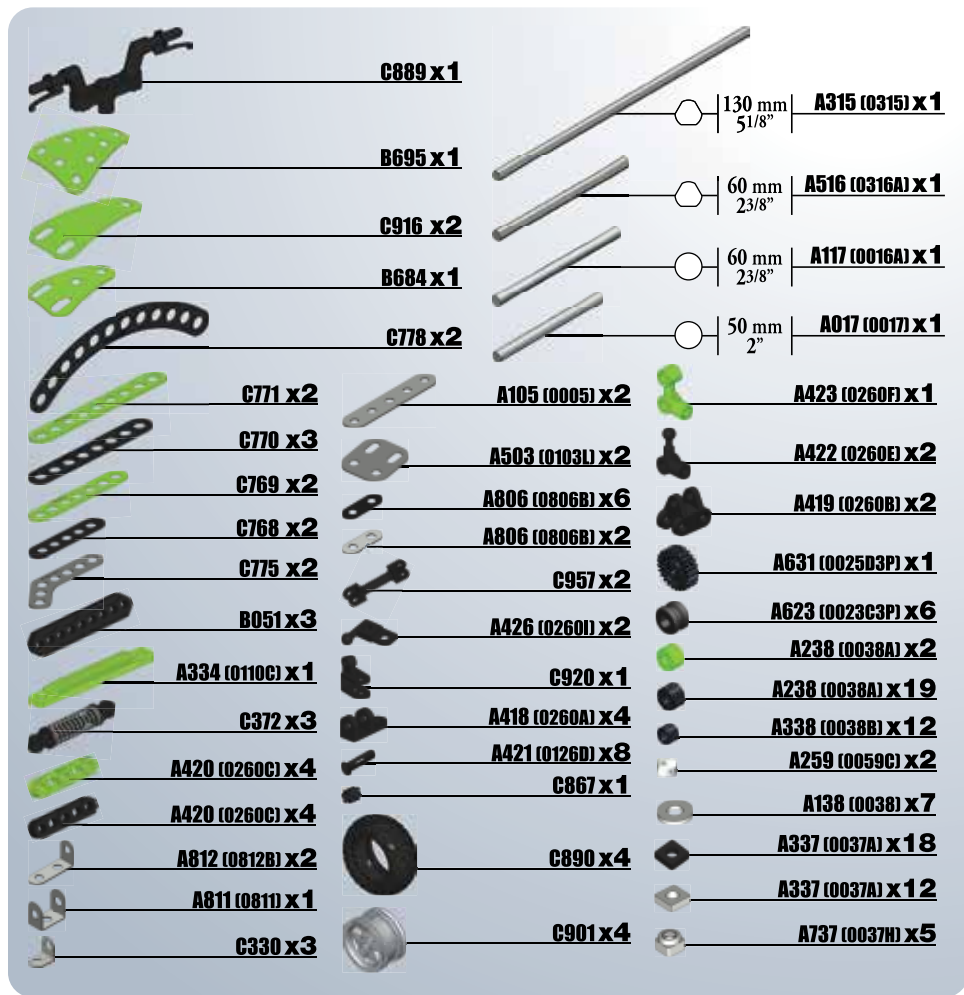
GB. Only one model can be built at a time. F. Les pièces fournies ne permettent de monter qu'un seul modèle à la fois. E. Solo es posible construir un modelo a la vez. D. Jeweils nur eins der Modelle baubar. NL. Er kan maar een model tegelijk worden gebouwd. I. Permette di realizzare un solo modello per volta. P. Só é possível montar um modelo de cada vez. GR. Μπορείτε να δημιουργείτε μόνο ένα μοντέλο κάθε φορά. S. Endast en modell kan byggas i taget. DK. Der kan kun bygges én model af gangen. FIN. Osista voidaan koota kerrallaan vain yksi malli. R. Одновременно можно построить только одну модель.



AVAILABLE ONLINE / DISPONIBLE EN LIGNE

DISPONIBLES EN LÍNEA / ONLINE VERFÜGBAR / ONLINE BESCHIKBAAR /
DISPONIBILI ONLINE / DISPONÍVEL ONLINE / ΔΙΑΘΕΤΑΙ ΣΤΟ
ΔΙΑΔΙΚΤΥΟ / TILLGÄNGLIGA ONLINE / KAN KØBES ONLINE / SAATAVILLA
VERKOSSA / ДОСТУПНЫ В ОНЛАЙН-МАГАЗИНЕ

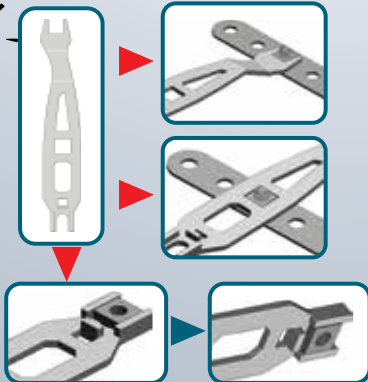
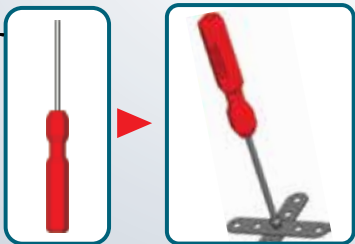
- GB Building instructions for model#2 are available at www.meccano.com.
- F La notice de montage du modèle 2 est disponible sur www.meccano.fr
- E Hay instrucciones de construcción disponibles para el modelo 2 en www.meccano.com.
- D Die Bauanleitung für Modell Nr. 2 ist auf www.meccano.com zu finden.
- NL Bouwinstructies voor model#2 zijn beschikbaar op www.meccano.com.
- PT Le istruzioni di montaggio del modello 2 sono disponibili alla pagina www.meccano.com.
- GR As instruções de montagem para o modelo 2 estão disponíveis em www.meccano.com.
- SV Oi οδηγίες κατασκευής για το μοντέλο#2 διατίθενται στη διεύθυνση www.meccano.com.
- DK Byggeinstruktioner for modell#2 findes på www.meccano.com.
- FI Byggevejledning til model#2 findes på www.meccano.com.
- R Mallin 2 rakennusohjeet ovat saatavilla osoitteesta www.meccano.com.
- GB Instructions for model#2 can be found on the website www.meccano.com.





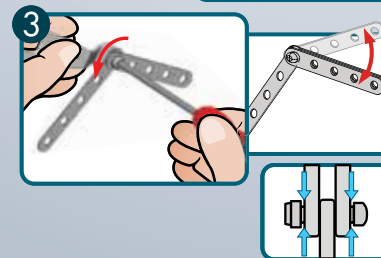
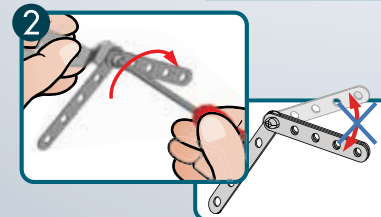
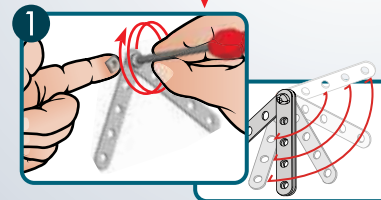
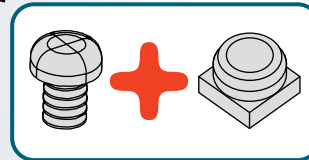
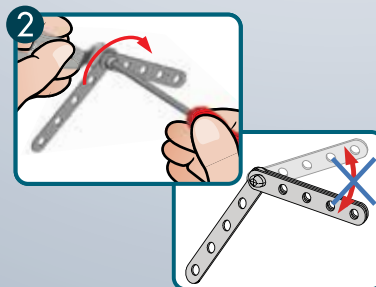
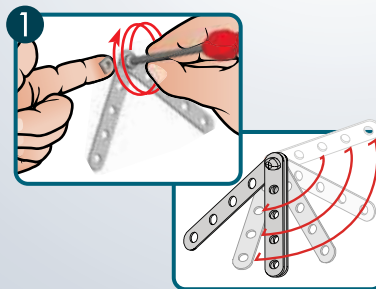
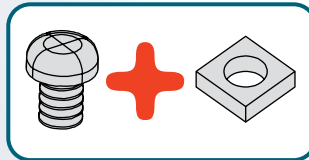
CONSTRUCTION TIPS
ASTUCES DE CONSTRUCTION

TIPS DE CONSTRUCCIÓN
TIPPS ZUM BAUEN
MONTAGETIPS
SUGGERIMENTI PER COSTRUIRE
DICAS DE MONTAGEM
ΣΥΜΒΟΥΛΕΣ ΚΑΤΑΣΚΕΥΗΣ
BYGGTIPS
BYGGTIPS
KOKOAMISONJE
РЕКОМЕНДАЦИИ ПО СБОРКЕ



NEW TOOLS/NOUVEAUX OUTILS

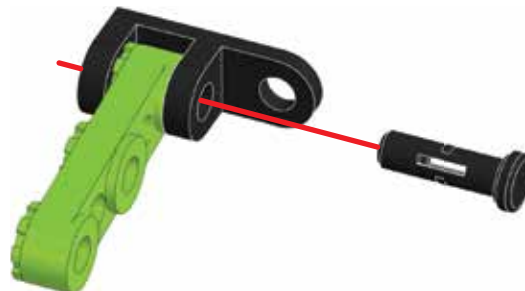
NUEVAS HERRAMIENTAS/NEUE WERKZEUGE/NIEUW GEREEDSCHAP
NUOVI ATTREZZI/NOVAS FERRAMENTAS/NEA ΕΡΓΑΛΕΙΑ/NYA VERKTYG
NYE VÆRKTØJER/ UDEET TYÖKALUT/НОВЫЕ ИНСТРУМЕНТЫ





1

	A420 (0260c) X4
	A418 (0260A) X4
	A421 (01260) X4



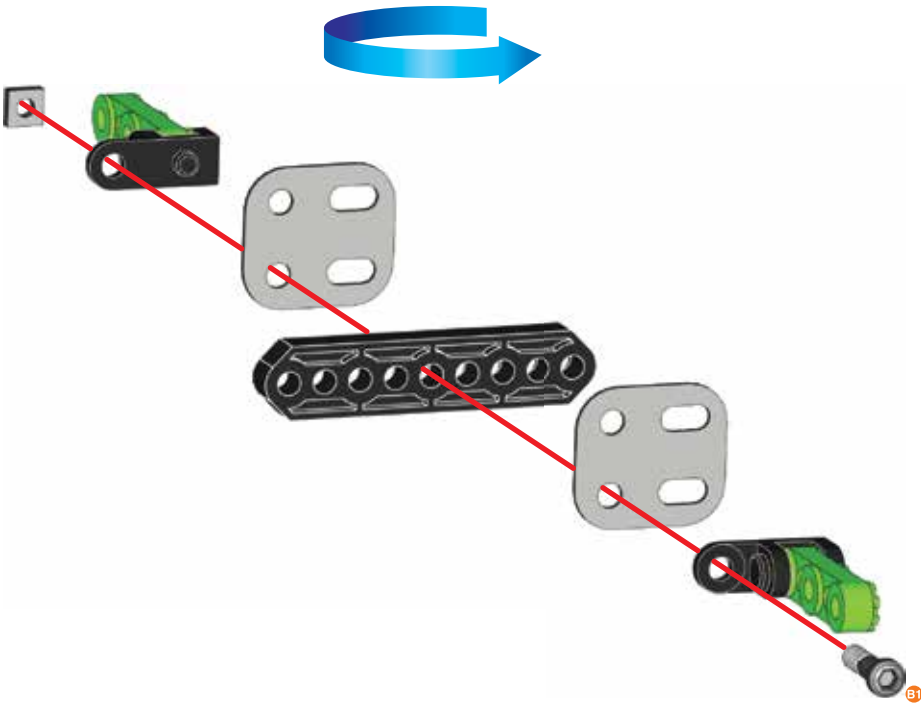
x4



2

	B051 x1
	A503 (0103U) x2
	14,7 mm A247 (0147D) x1 37/64"
	A337 (0037A) x1

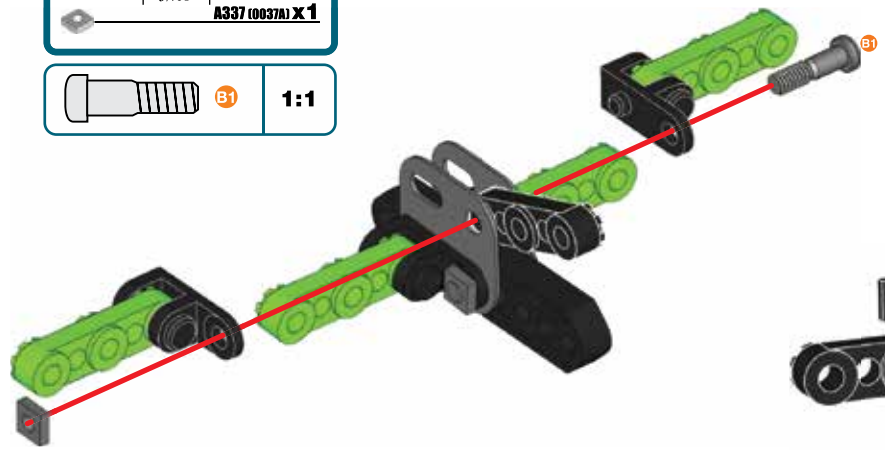
	B1	1:1
--	-----------	------------



3 ①+

	A420 (0260C) X1
	A247 (0147D) X1
	A337 (0037A) X1

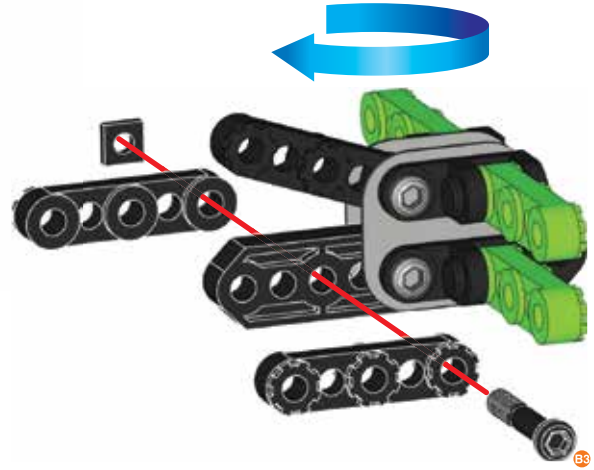
	B1	1:1
--	-----------	------------



4

	A420 (0260C) X2
	A347 (0147E) X1
	A337 (0037A) X1

	B3	1:1
--	-----------	------------



5



C776 x2



C770 x2



A912 (0111E) x1

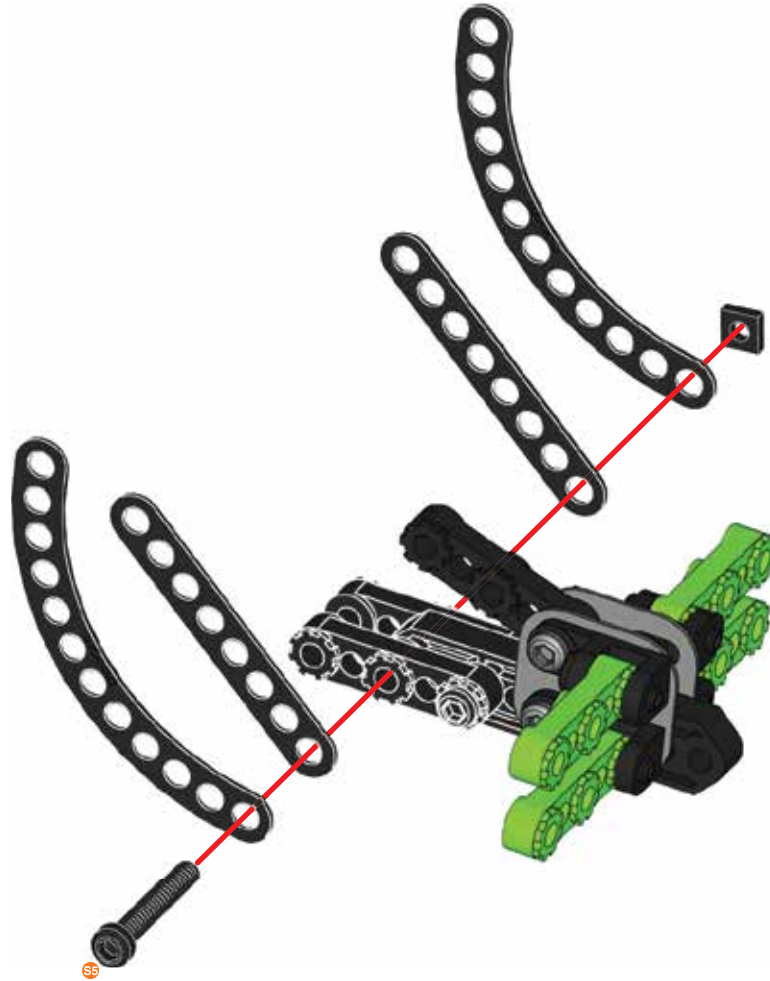


A337 (0037A) x1





S5

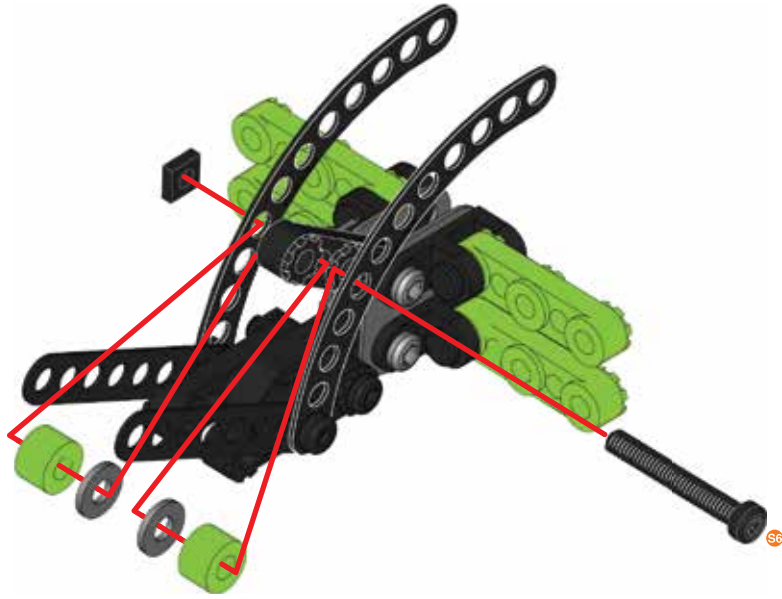
1:1








6

-  **A238 (0038A) X2**
-  **28 mm** | **A611 (0111D) X1**
1 1/8"
-  **A337 (0037A) X1**
-  **A138 (0038) X2**

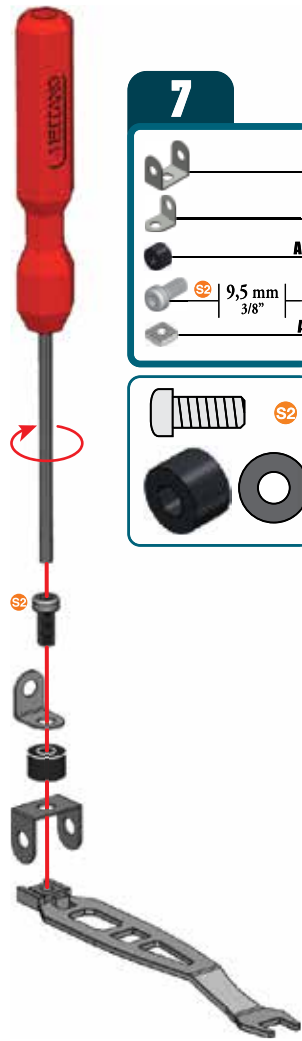
-  **S6** **1:1**








7

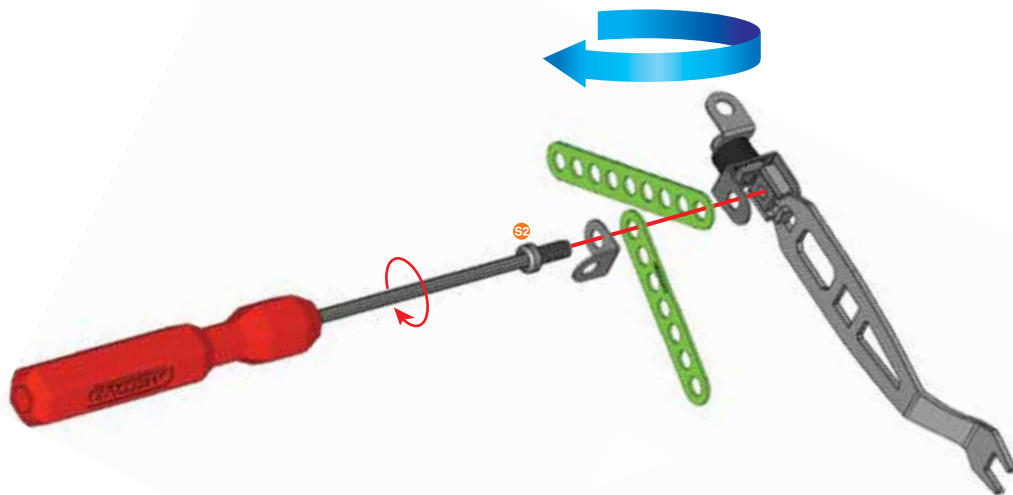
-  **A611 (0811A) X1**
-  **C330 X1**
-  **A238 (0038A) X1**
-  **9,5 mm** | **A511 (0111C) X1**
3/8"
-  **A337 (0037A) X1**






-  **S2**
-  **A238**
- 1:1**



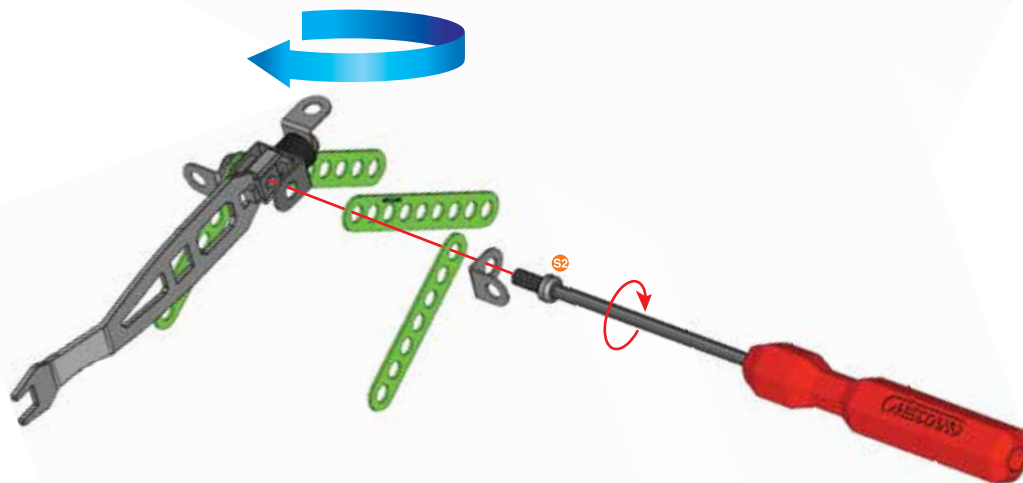
8	7+
	C771 x1
	C769 x1
	C330 x1
 S2 9,5 mm A511 (0111C) x1	
 A337 (0037A) x1	

	S2	1:1
---	-----------	------------



9	
	C771 x1
	C769 x1
	C330 x1
 S2 9,5 mm A511 (0111C) x1	
 A337 (0037A) x1	

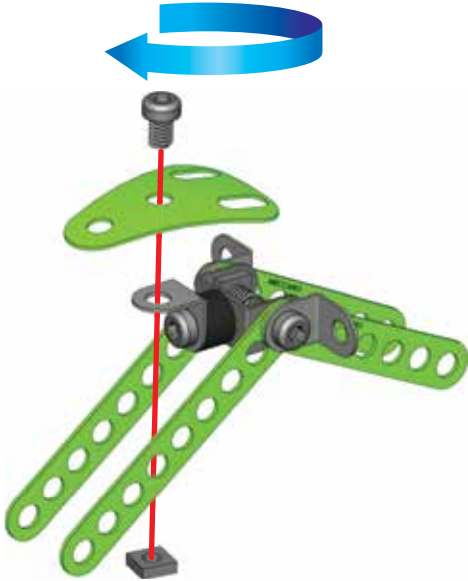
	S2	1:1
--	-----------	------------



10

	B684 X1
	A637 (0037B) X1
	A337 (0037A) X1

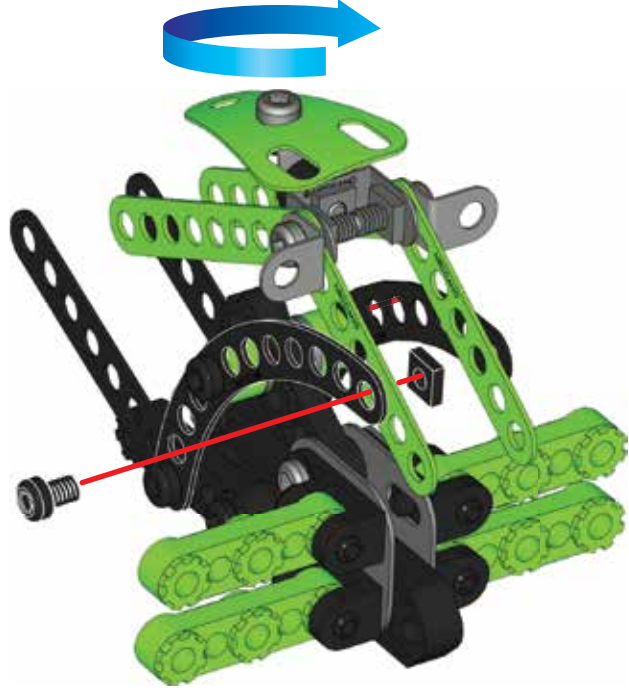
	S1	1:1
--	-----------	------------





11 **6 + 10 +**

	S1	5,8 mm 15/64"	A637 (0037B) X1
			A337 (0037A) X1

	S1	1:1
--	-----------	------------





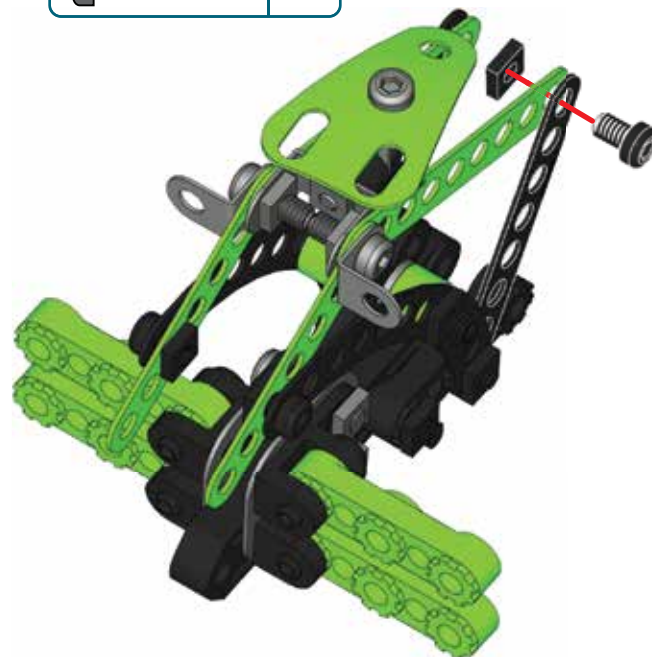
12

 S1 | 5,8 mm | A637 (0037B) X 1
15/64"
 A337 (0037A) X 1



13

 S1 | 5,8 mm | A637 (0037B) X 1
15/64"
 A337 (0037A) X 1



14



C889 x1



60 mm
2 3/8" | A516 (0316A) x1



1:1



15



C768 x2



C920 x1



12 mm
1/2" | A411 (0111A) x1

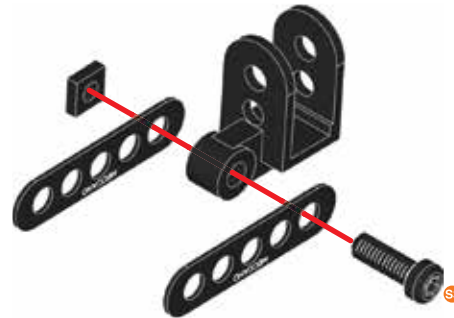


A337 (0037A) x1



S

1:1







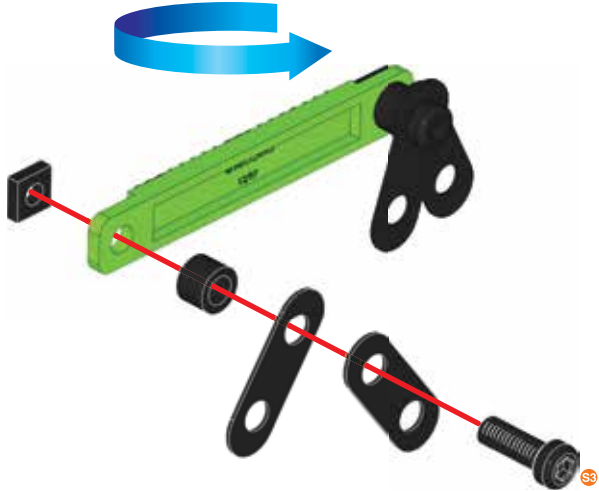
16

-  **A334 (0110C) X1**
-  **A806 (0806B) X2**
-  **A338 (0038B) X1**
-  **A411 (0111A) X1**
-  **A337 (0037A) X1**



17

-  **A806 (0806B) X2**
-  **A338 (0038B) X1**
-  **A411 (0111A) X1**
-  **A337 (0037A) X1**



18

	A426 (0260) X 1
 S1	5,8 mm A637 (0037B) X 1 15/64"
	A337 (0037A) X 1

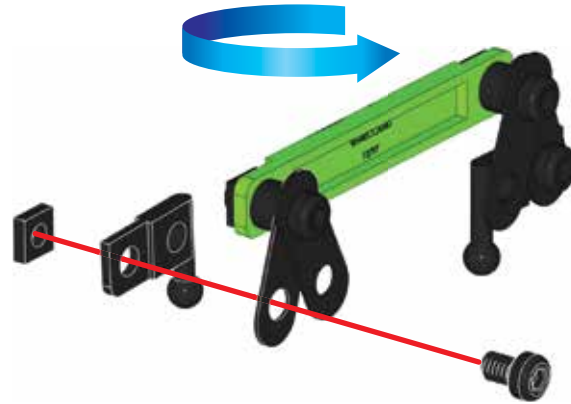
	S1	1:1
---	----	------------



19

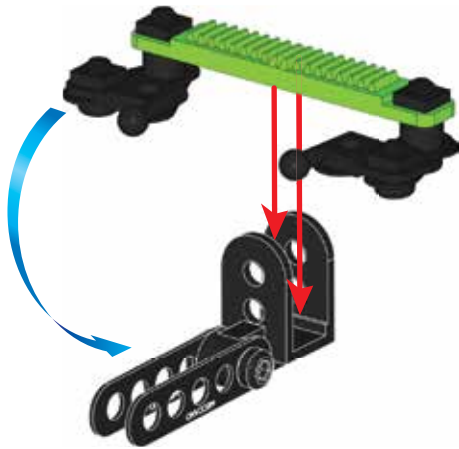
	A426 (0260) X 1
 S1	5,8 mm A637 (0037B) X 1 15/64"
	A337 (0037A) X 1

	S1	1:1
---	----	------------



20

15 + 19



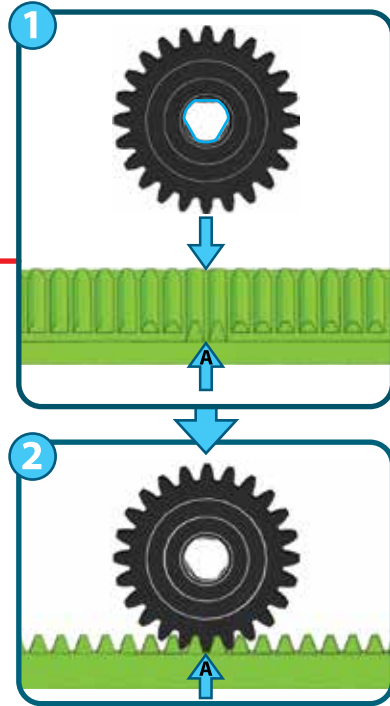
21

14 + 20



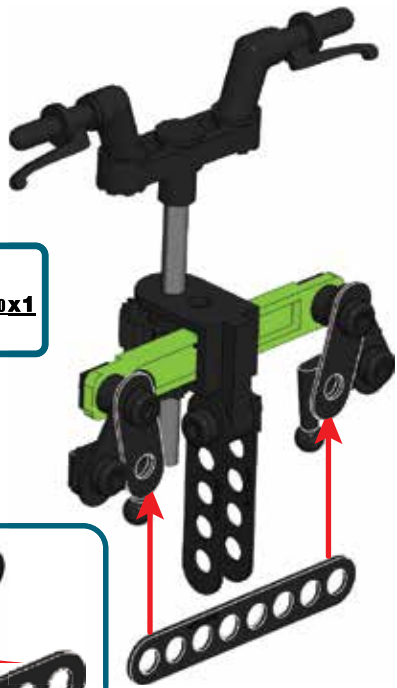
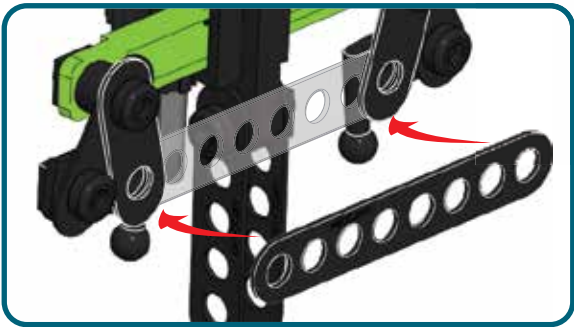
A631 (002503P) x 1

C867 x 1



22

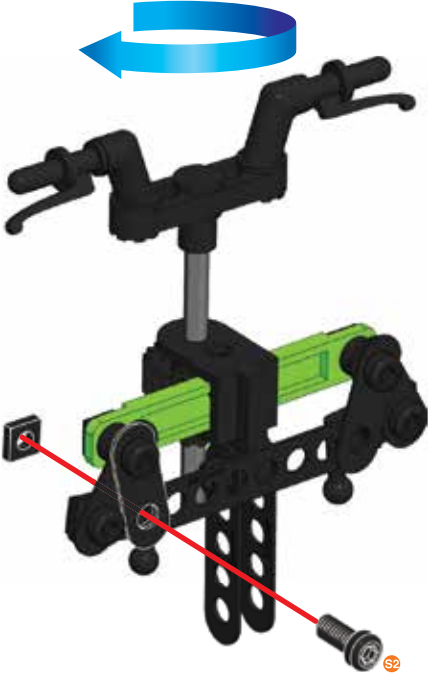
C770 x1




23

	9,5 mm 3/8"	A511 (0111C) X1
		A337 (0037A) X1

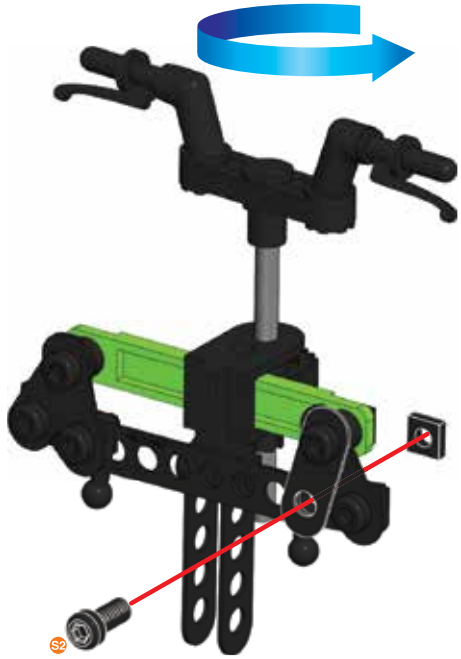
	1:1
--	------------



24

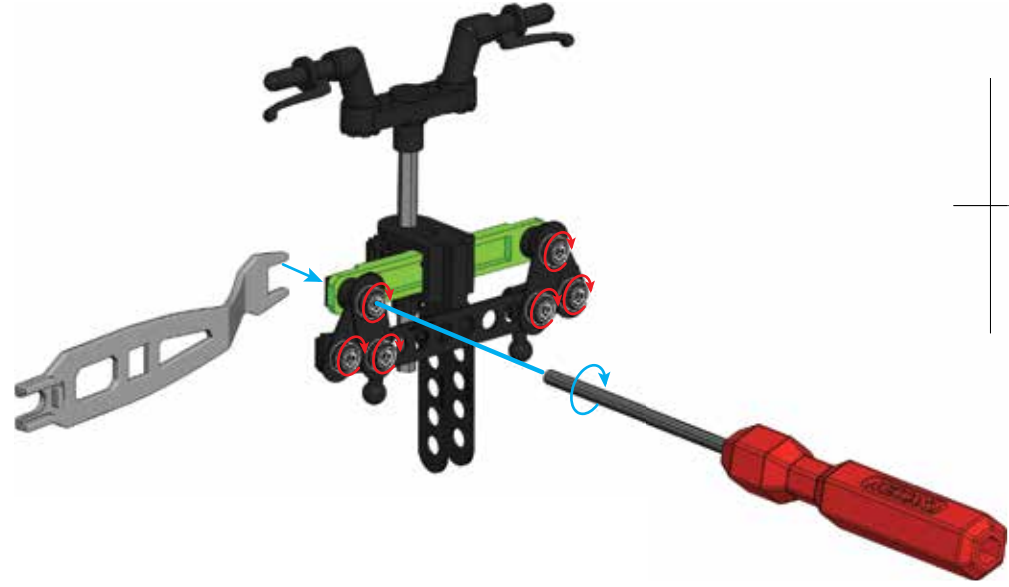
 9,5 mm | A511 (0111C) X 1
3/8" | A337 (0037A) X 1

 S2 | 1:1



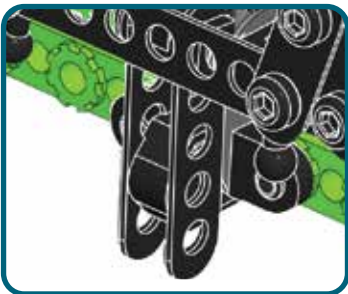
25

24



26

13 + 25



27



C75 x2



A238 (0038A) x2



A611 (01110) x1



A337 (0037A) x1

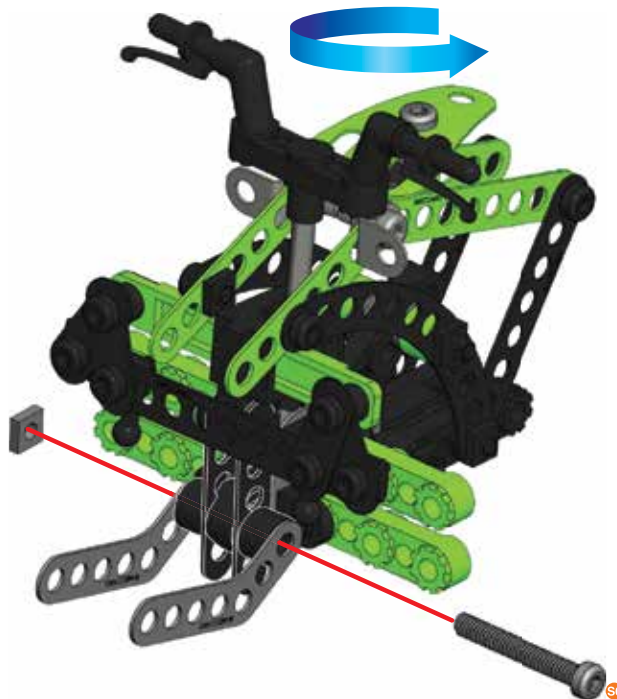


S6



A238

1:1



28



A419 (02608) X 1



A421 (01260) X 1



29



C372 X 1



A912 (0111E) X 1

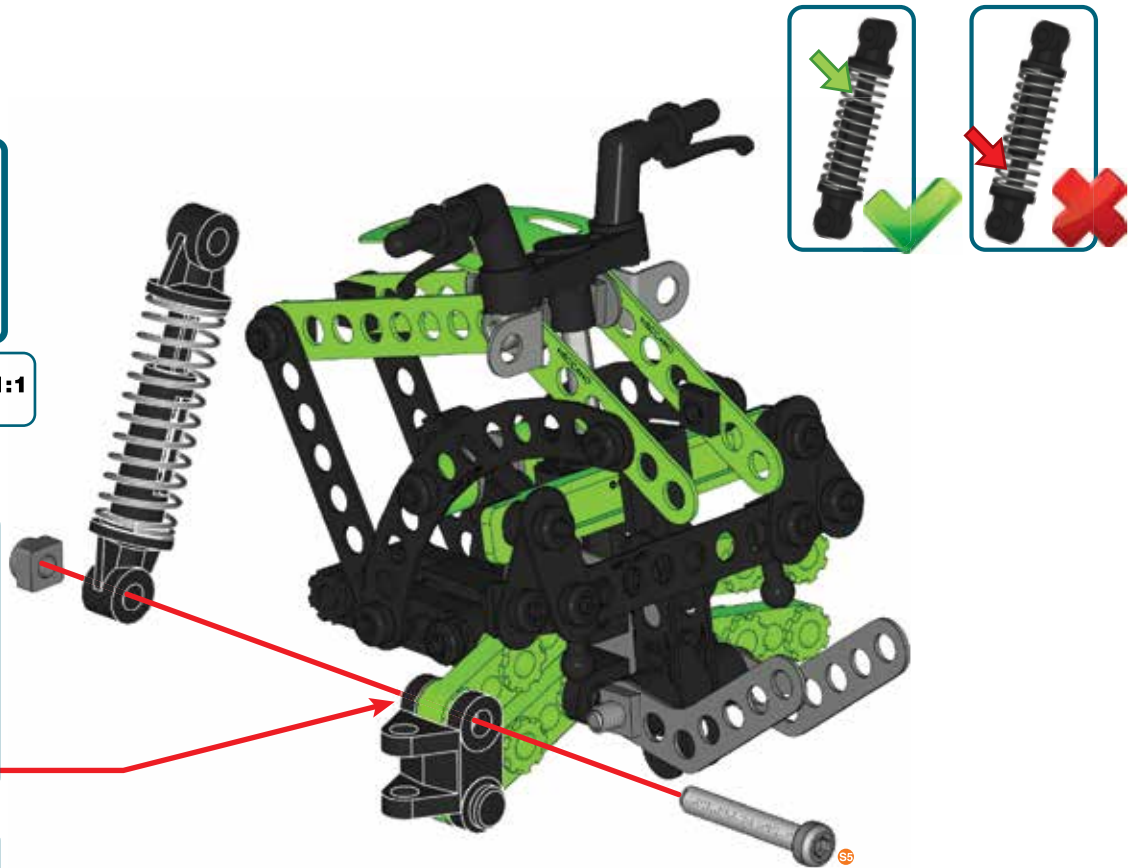
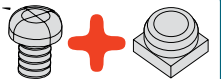
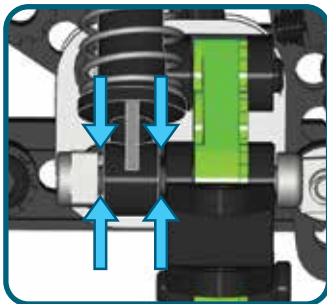


A737 (0037H) X 1





S5

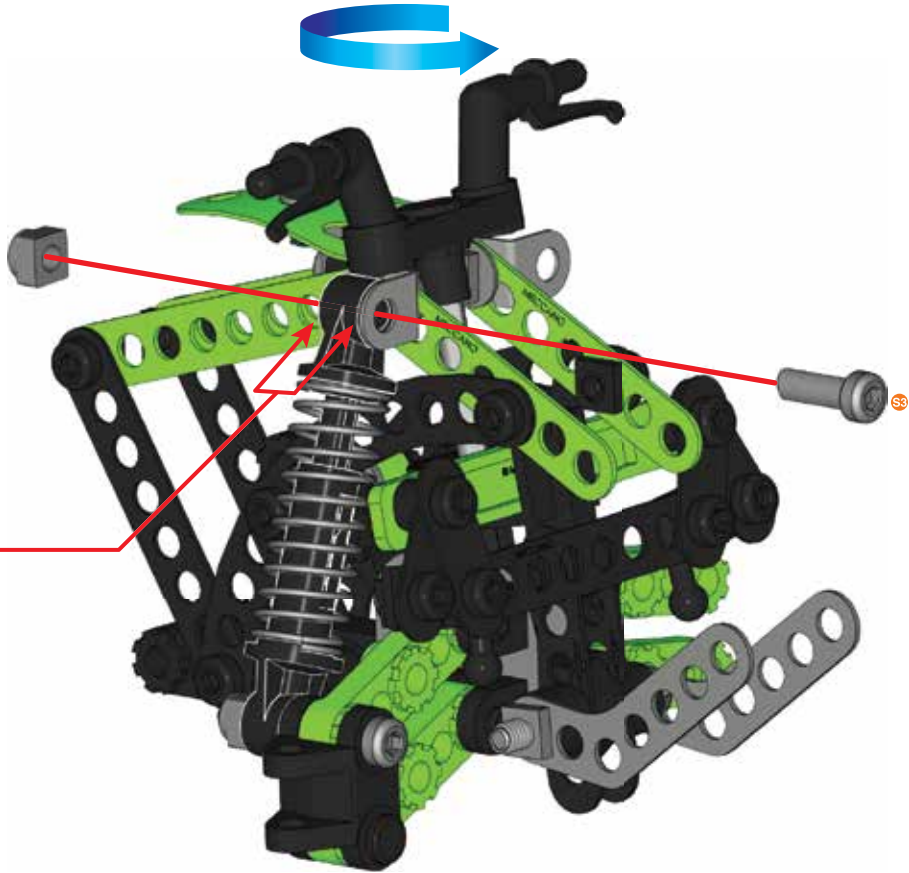
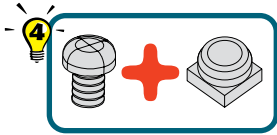
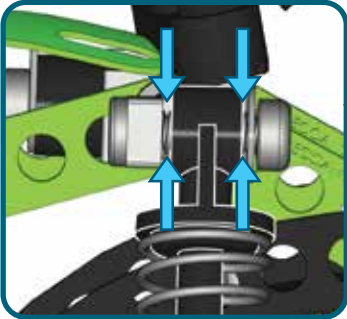
1:1



30

	12 mm 1/2"	A411 (0111A) X 1
		A737 (0037H) X 1

	S3	1:1
---	----	-----



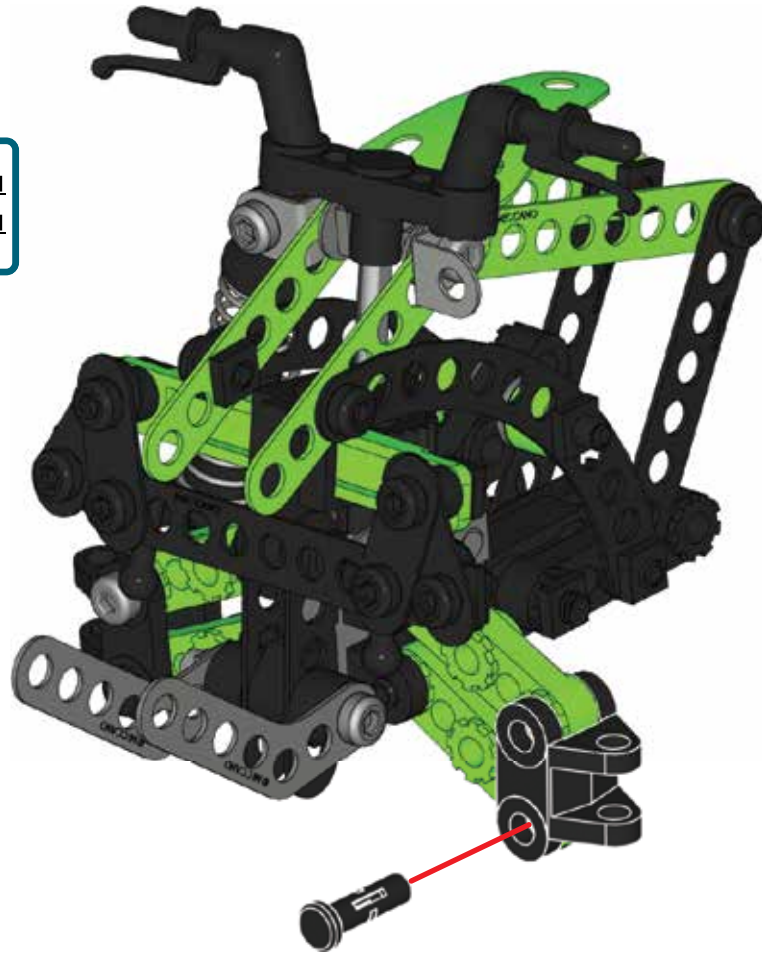
31






A419 (02608) x 1



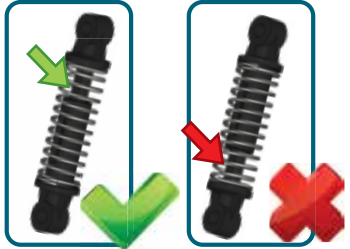
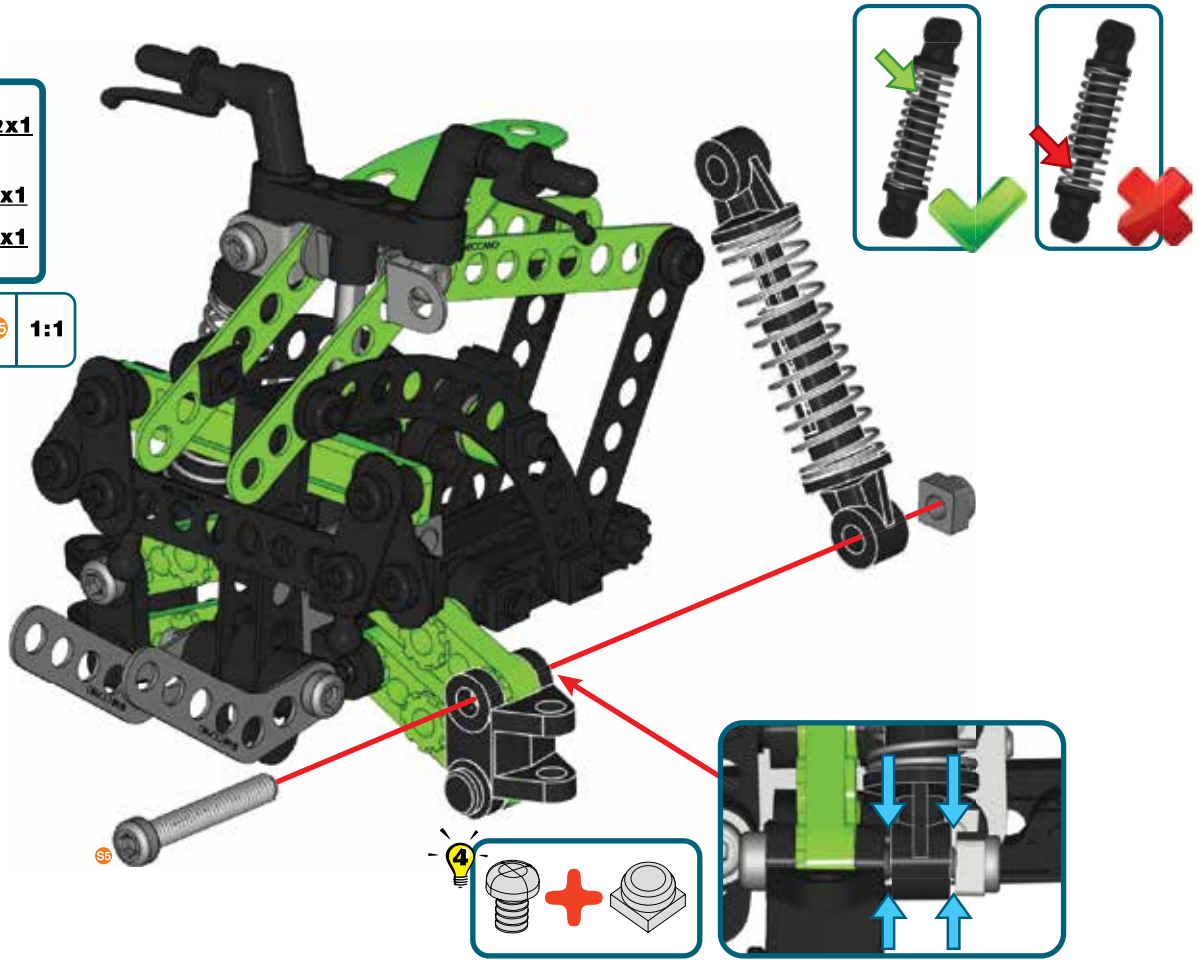
A421 (01260) x 1




32

-  **C372 x 1**
-  **A912 (0111E) x 1**
-  **A737 (0037H) x 1**

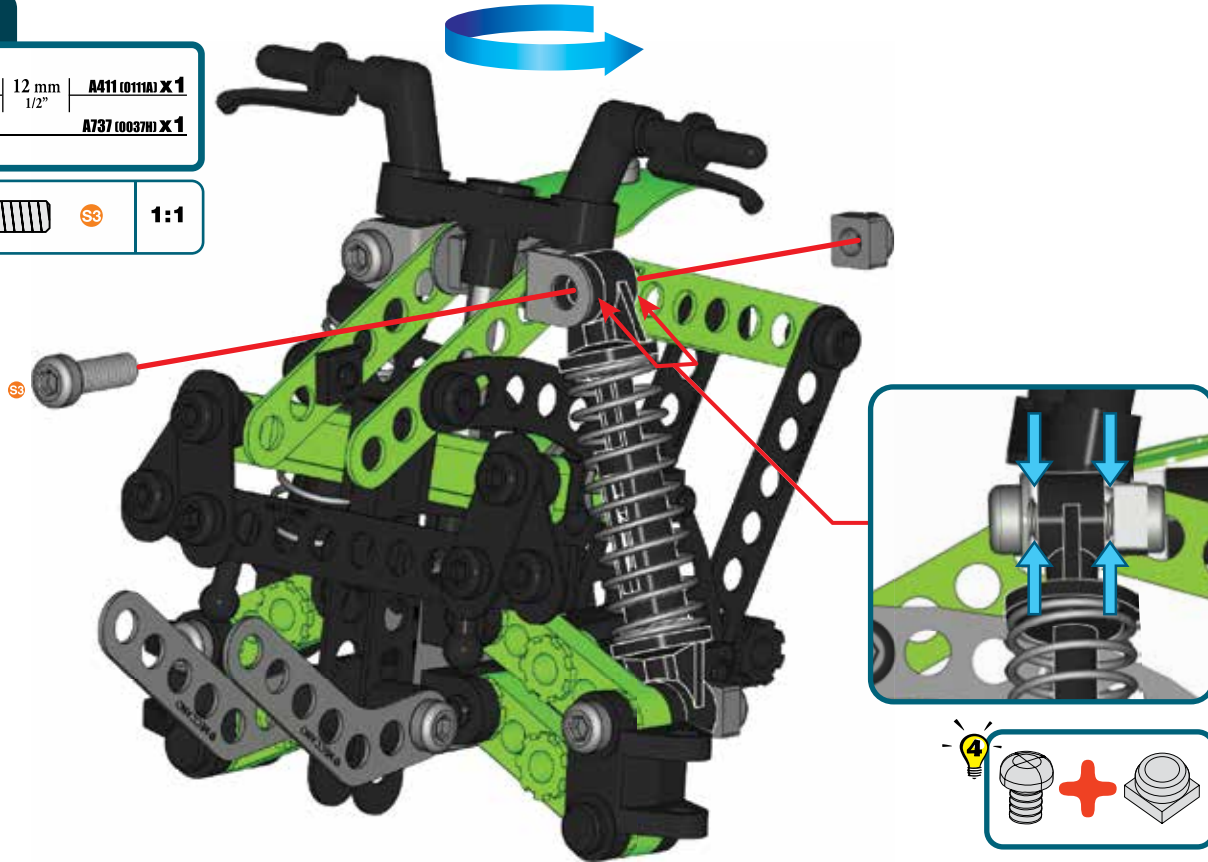
-  **SS 1:1**



33

 12 mm | **A411 (0111A) x 1**
1/2" | **A737 (0037H) x 1**

  **1:1**



34



A423 (0260F) X 1



A338 (0038B) X 2



23 mm
1 5/16"

A347 (0147G) X 1



A337 (0037A) X 1

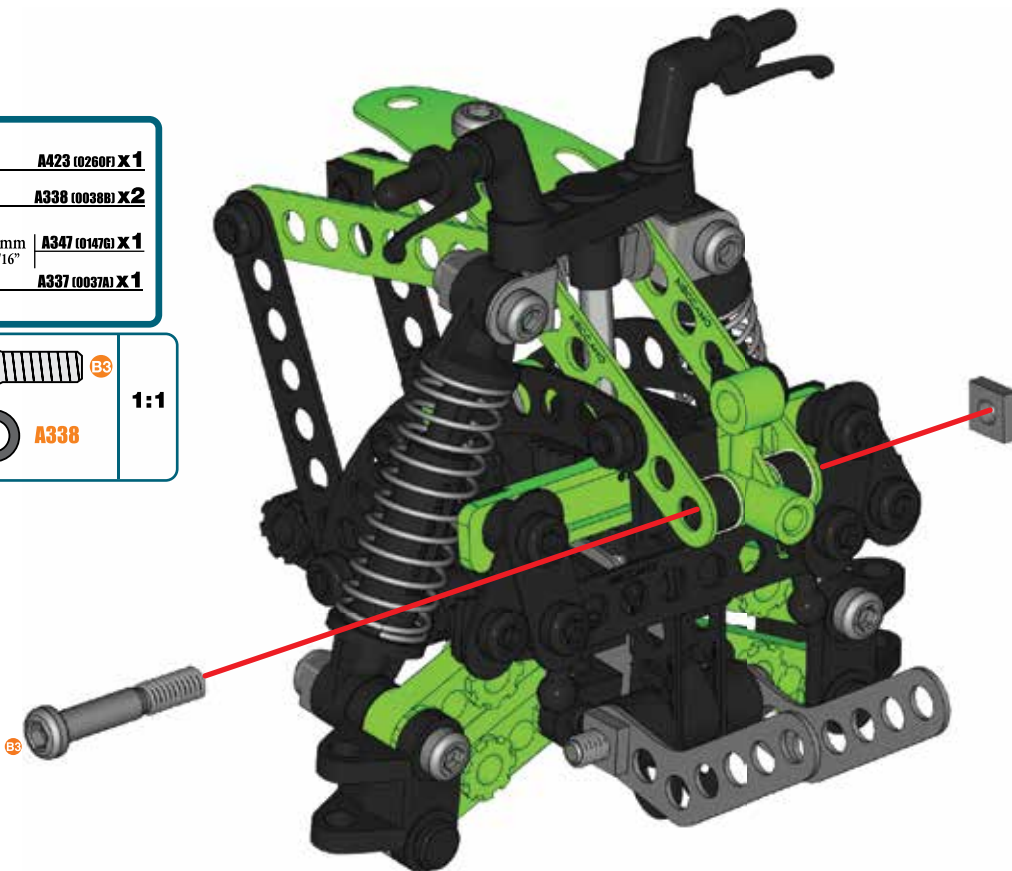


B3



A338

1:1



35



B695 x 1



5,8 mm
15/64"

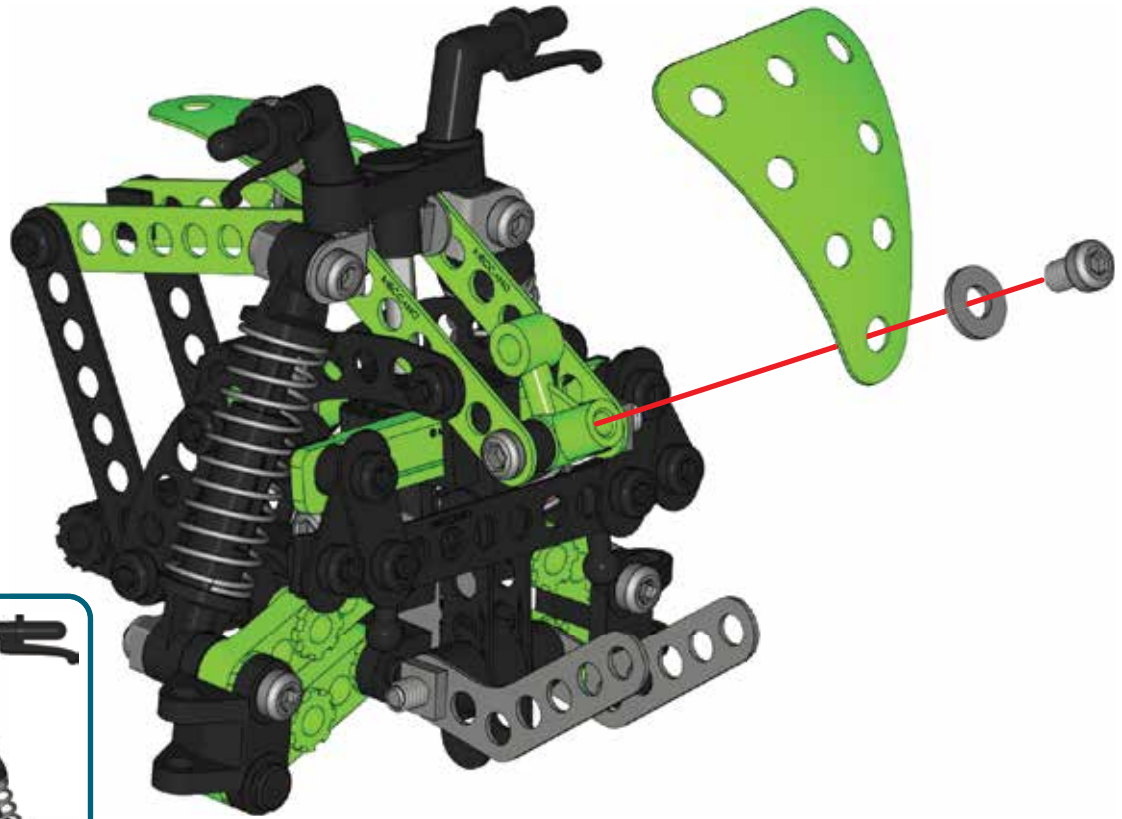
A637 (00378) x 1

A138 (0038) x 1



S1

1:1



36



A422 (0260F) X2

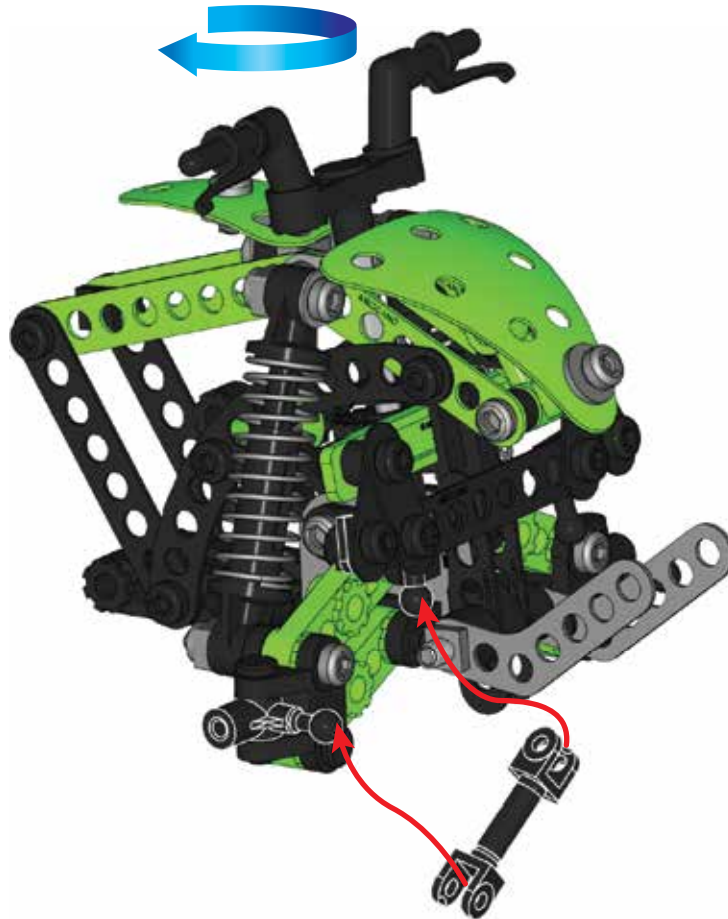
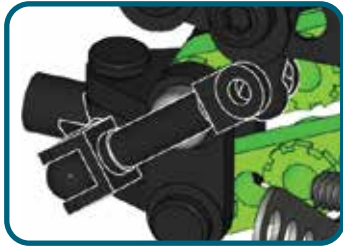
A421 (0126D) X2



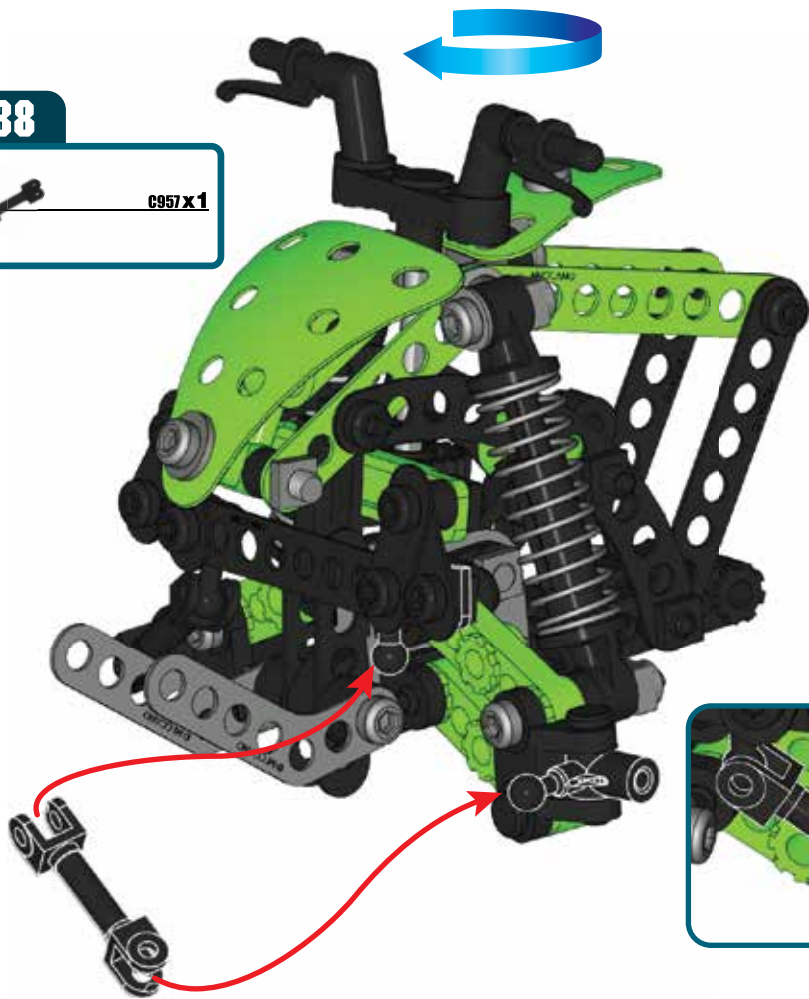
37




C957 x1



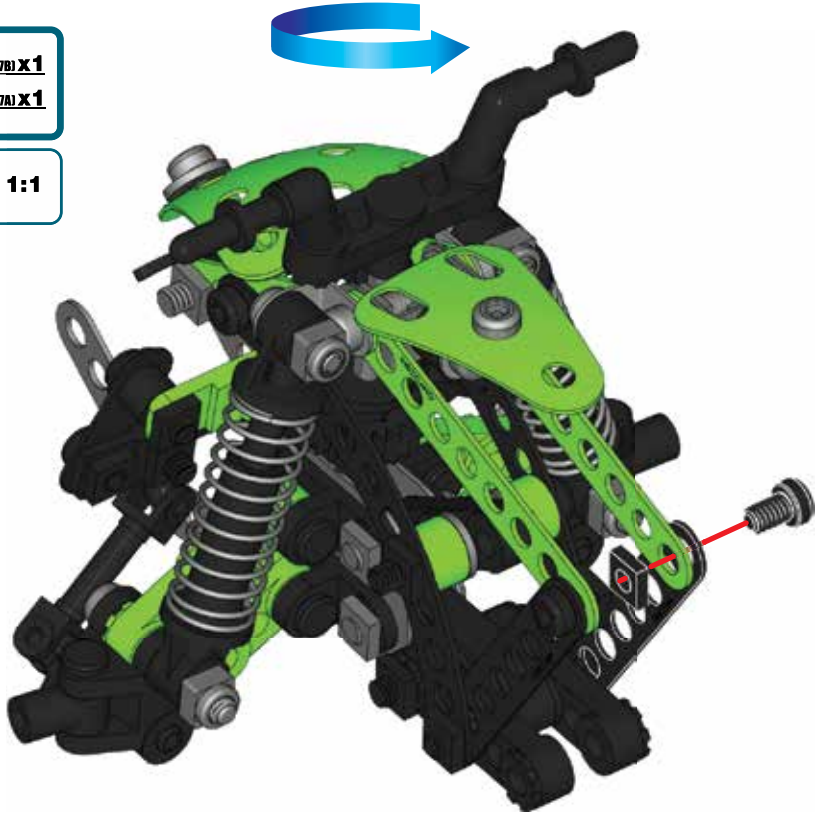
38



39

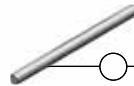
 **S1** | 5,8 mm | **A637 (0037B) X 1**
15/64" | **A337 (0037A) X 1**

 **S1** | **1:1**



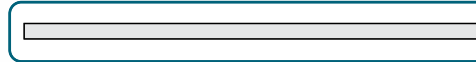


40

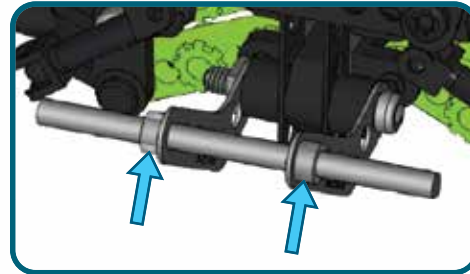


A117 (0016A) X1

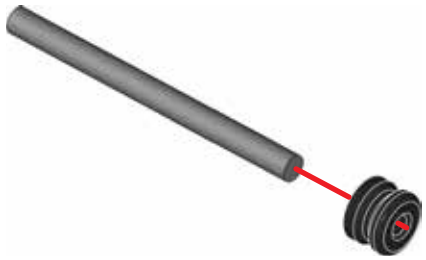
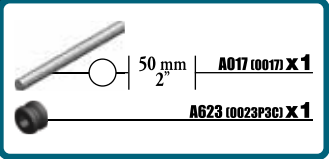
A259 (0059C) X2



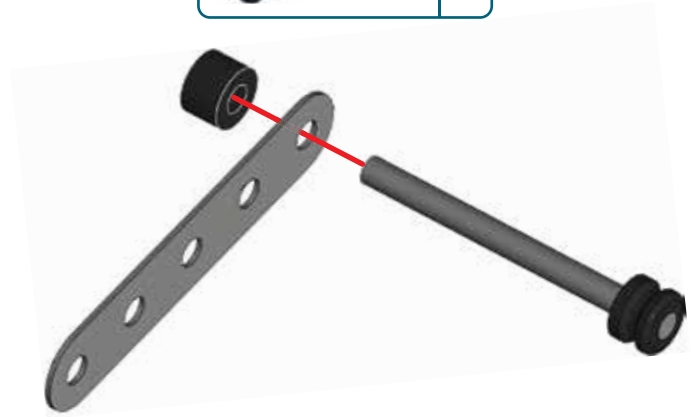
1:1



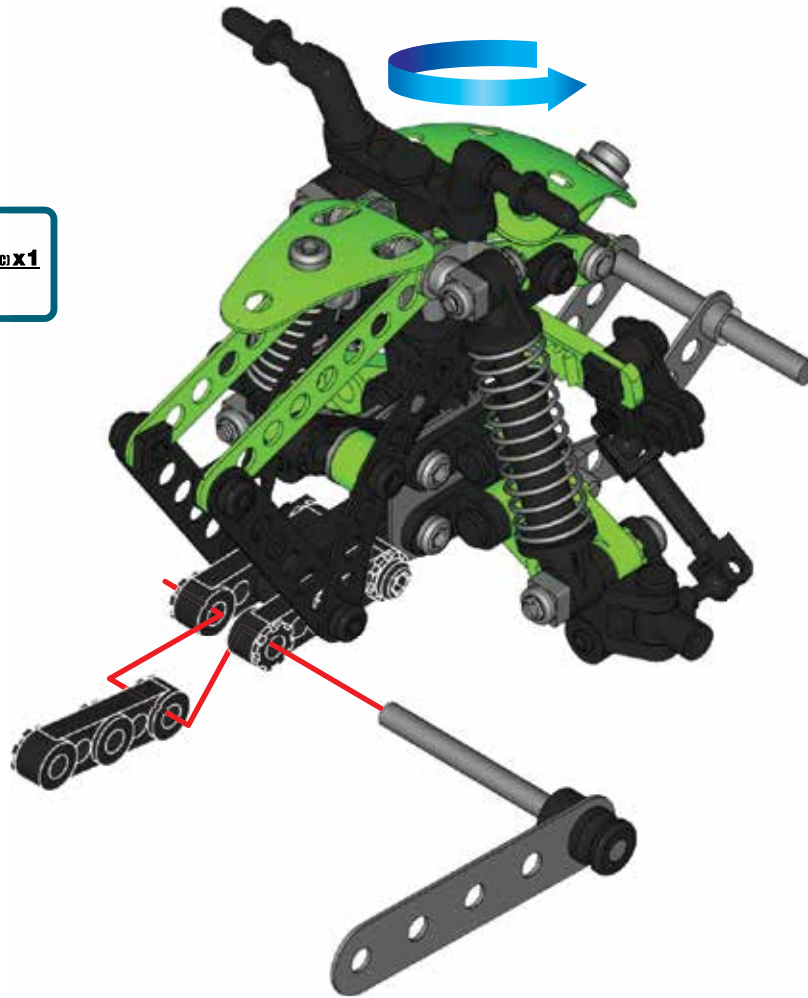

41



42



43 (40) + (42) +
A420 (ø260c) x 1



44



A105 (0005) X 1



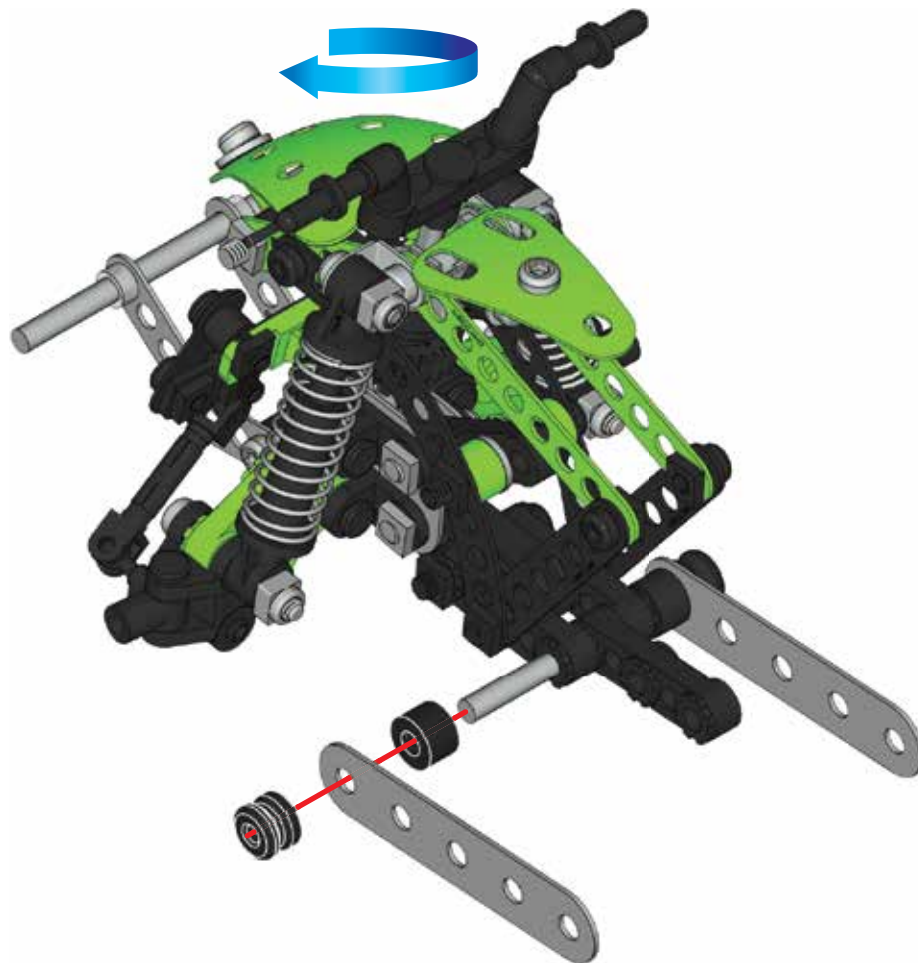
A238 (0038A) X 1




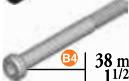

A623 (0023P3C) X 1

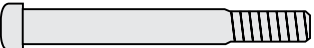




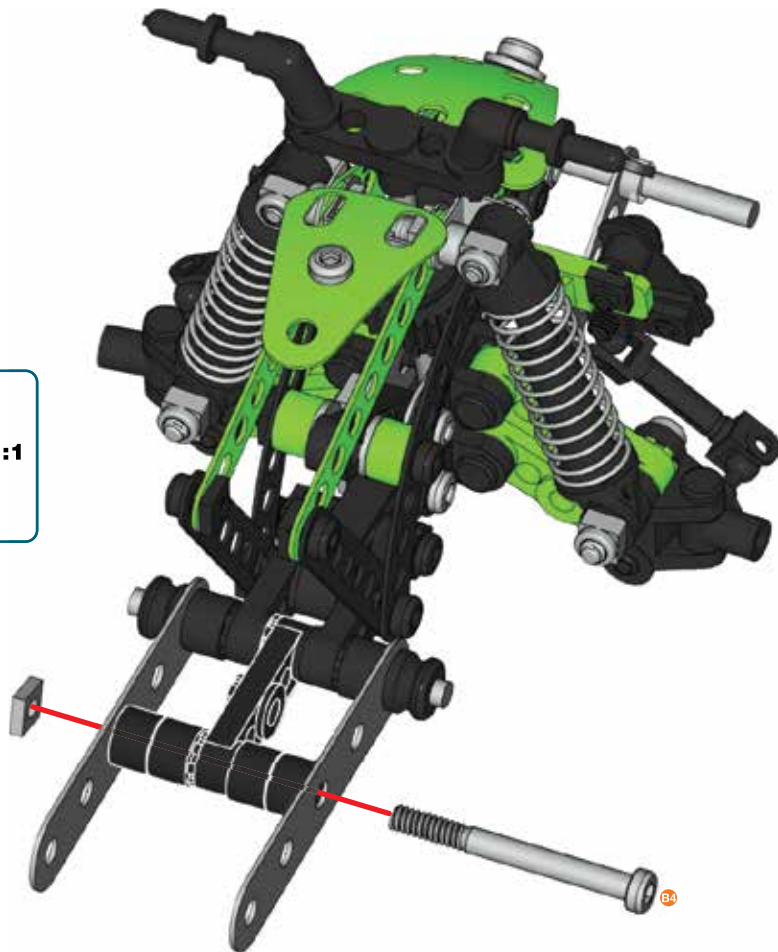
A238 1:1





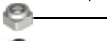
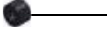
45



-  **A238 (0038A) x4**
-  **B696 x1**
38 mm
1 1/2"
-  **A337 (0037A) x1**

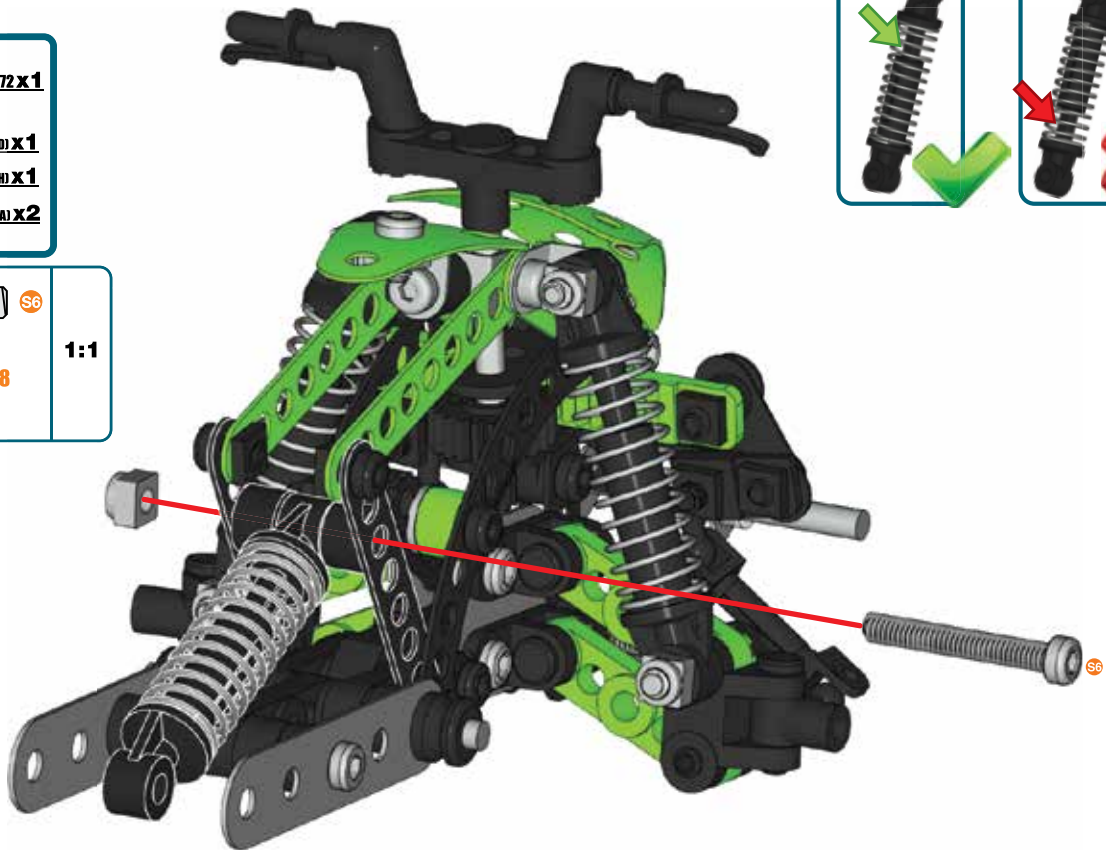
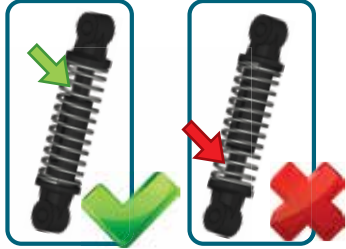
	B4	1:1
		



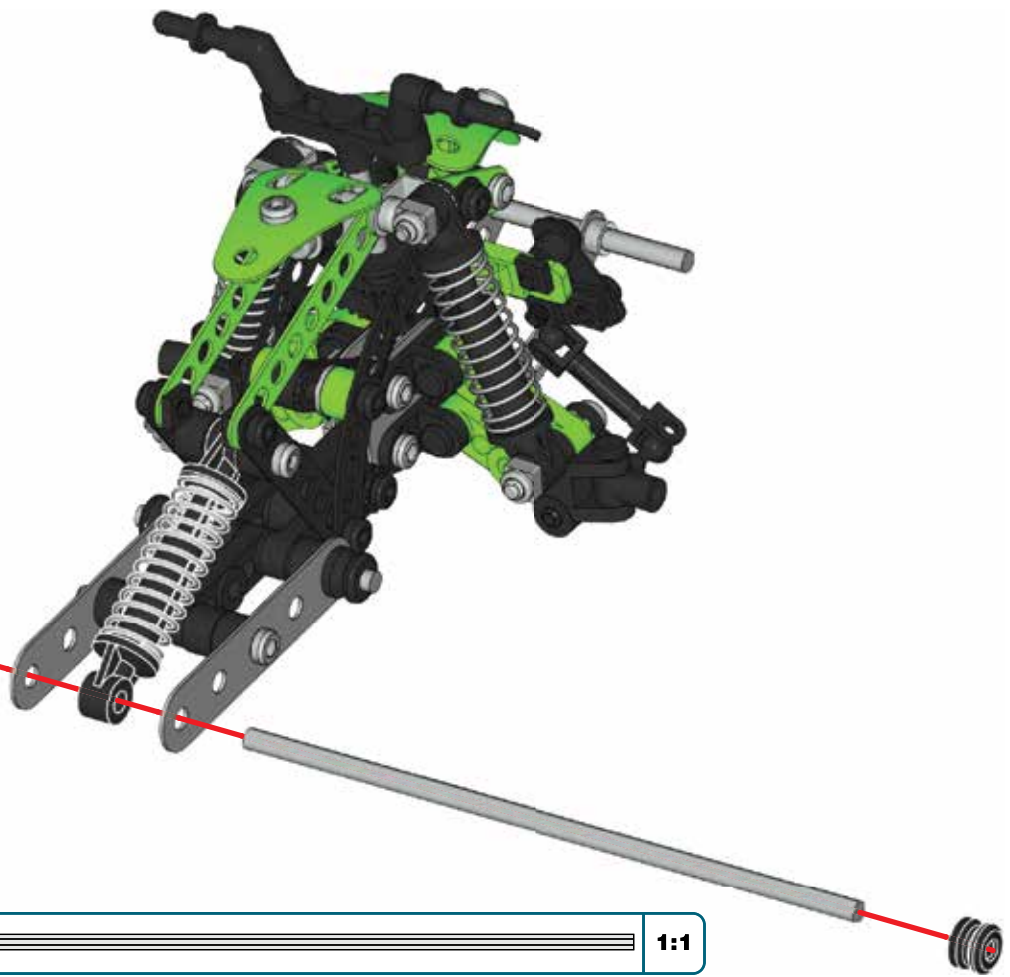
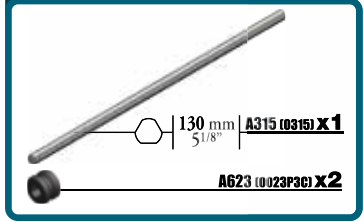
46

-  **C372 x 1**
-  **A611 (01110) x 1**
-  **A737 (0037H) x 1**
-  **A238 (0038A) x 2**



-  **S6**
 -  **A238**
- 1:1**




47





48

-  **B051 x2**
-  **A812 (0812B) x2**
-  **A806 (0806B) x2**
-  19 mm | **A911 (0111) x1**
3/4"
-  **A337 (0037A) x1**
-  **A138 (0038) x1**






-  **S4** | **1:1**

49

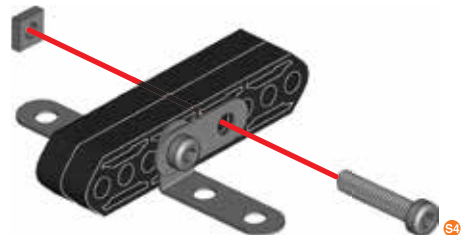
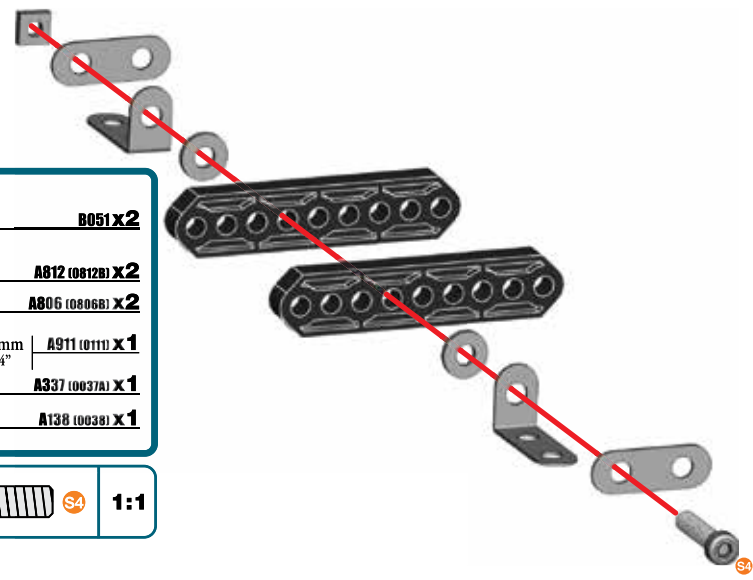
-  19 mm | **A911 (0111) x1**
3/4"
-  **A337 (0037A) x1**

-  **S4** | **1:1**




50


-  **C916 x1**
-  **A806 (0806B) x1**
-  **A338 (0038B) x2**
-  14,7 mm | **A247 (0147D) x1**
37/64"
-  **A337 (0037A) x1**

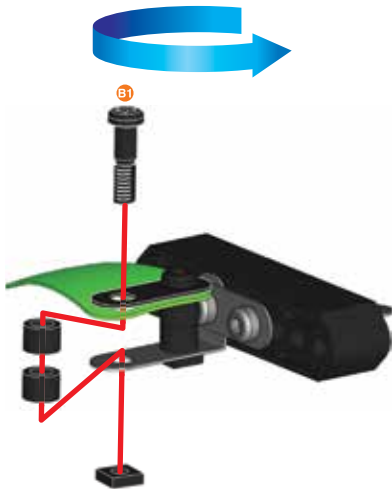
-  **B1**
-  **A338**
- 1:1**








51

	A338 (00388) X2
 B1 14,7 mm 37/64"	A247 (01470) X1
	A337 (0037A) X1




 B1	1:1
 A338	

**52**

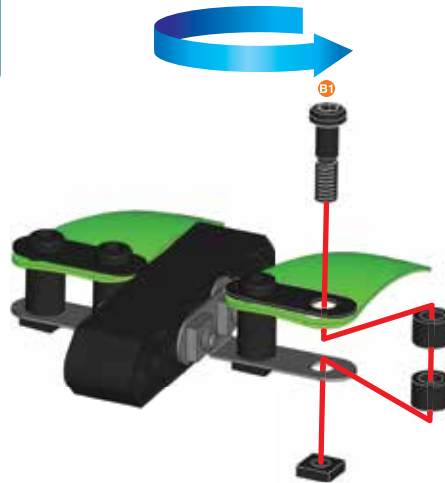
	C916 X1
	A806 (0806B) X1
	A338 (00388) X2
 B1 14,7 mm 37/64"	A247 (01470) X1
	A337 (0037A) X1

 B1	1:1
 A338	

**53**




	A338 (00388) X2
 B1 14,7 mm 37/64"	A247 (01470) X1
	A337 (0037A) X1

 B1	1:1
 A338	

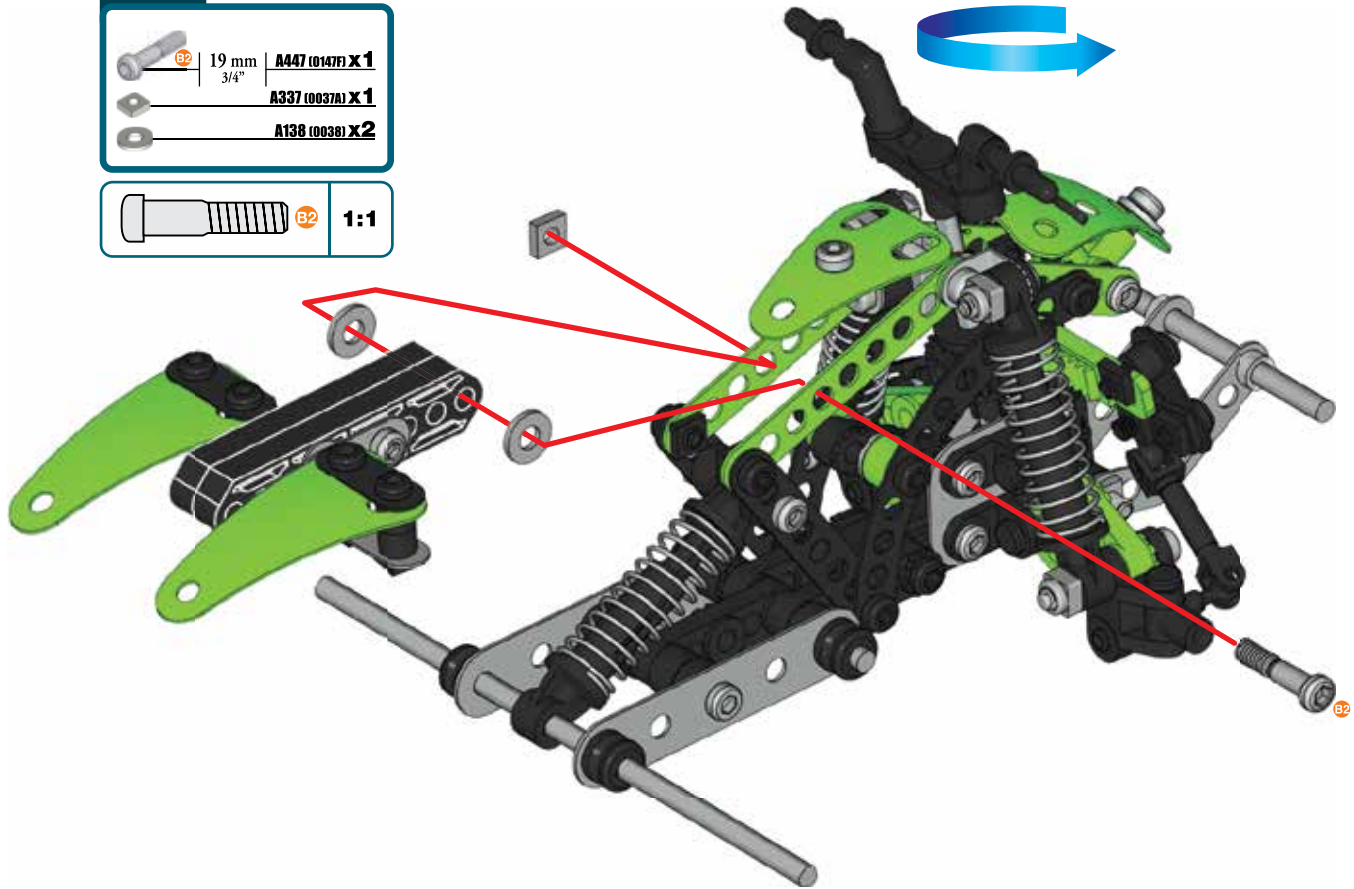


54

47 + 53 +

- | | | |
|---|---------------|-------------------------|
|  | 19 mm
3/4" | A447 (01471) X 1 |
|  | | A337 (00371) X 1 |
|  | | A138 (00381) X 2 |

- | | |
|---|------------|
|  | 1:1 |
|---|------------|



55



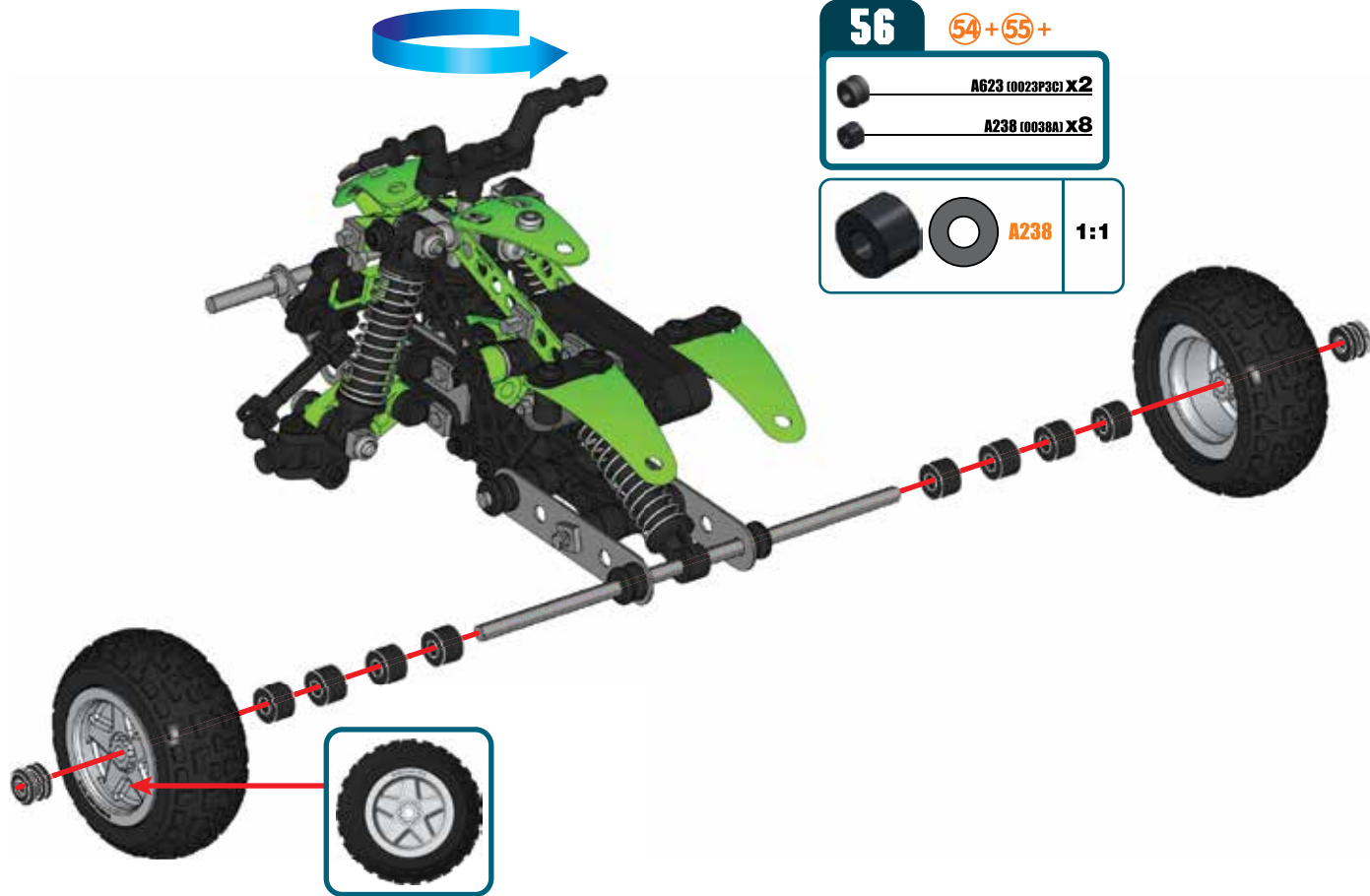
C890 x4




C901 x4

x4






57 **55+**

 **B2** | 19 mm
3/4" | **A447 (0147F) X 1**

 **B2** | **1:1**



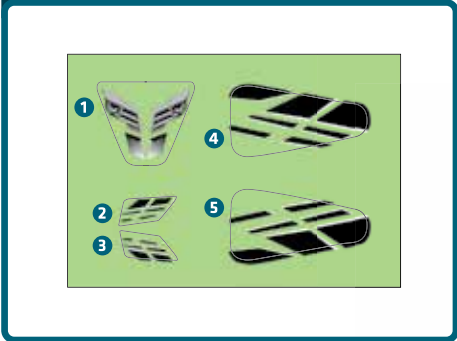
58 **55+**

 **B2** | 19 mm
3/4" | **A447 (0147F) X 1**

 **B2** | **1:1**



59







- **GB** Building instructions for model#2 are available at www.meccano.com. Only one model can be built at a time.
- **F** La notice de montage du modèle 2 est disponible sur www.meccano.fr. Les pièces fournies ne permettent de monter qu'un seul modèle à la fois.
- **E** Hay instrucciones de construcción disponibles para el modelo 2 en www.meccano.com. Solo es posible construir un modelo a la vez.
- **D** Die Bauanleitung für Modell Nr. 2 ist auf www.meccano.com zu finden. Jeweils nur eins der Modelle baubar.
- **NL** Bouwinstructies voor model#2 zijn beschikbaar op www.meccano.com. Er kan maar een model tegelijk worden gebouwd.
- **I** Le istruzioni di montaggio del modello 2 sono disponibili alla pagina www.meccano.com. Permette di realizzare un solo modello per volta.
- **P** As instruções de montagem para o modelo 2 estão disponíveis em www.meccano.com. Só é possível montar um modelo de cada vez.
- **GR** Οι οδηγίες κατασκευής για το μοντέλο#2 διατίθενται στη διεύθυνση www.meccano.com. Μπορείτε να δημιουργείτε μόνο ένα μοντέλο κάθε φορά.
- **S** Bygginstruktioner för modell#2 finns på www.meccano.com. Endast en modell kan byggas i taget.
- **DK** Byggevejledning til model#2 findes på www.meccano.com. Der kan kun bygges én model af gangen.
- **FIN** Mallin 2 rakennusohjeet ovat saatavilla osoitteesta www.meccano.com. Osista voidaan koota kerrallaan vain yksi malli.
- **R** Инструкции по сборке модели №2 можно найти на сайте www.meccano.com. Одновременно можно построить только одну модель.

- GB** Remove all packaging before use. Retain this information, addresses and phone numbers for future reference. Content may vary from pictures. Meccano reserves the right to discontinue the website www.meccano.com at any time. An adult should periodically check this toy to ensure no damage or hazard exist if so, remove from use. Children should be supervised during play.
- F** Retirer tout l'emballage avant utilisation. Conserver les informations, adresses et numéros de téléphone pour consultation ultérieure. Le contenu peut différer des images. Meccano se réserve le droit de supprimer le site Internet www.meccano.fr à tout moment. Un adulte doit régulièrement examiner ce jouet afin de s'assurer qu'il ne présente pas de dommage ni de risque. En cas de problème, ne plus l'utiliser. Les enfants doivent être surveillés lorsqu'ils jouent.
- E** Retire todo el embalaje antes de utilizar el producto. Conserve toda la información, las direcciones y los números de teléfono para futuras referencias. El contenido del paquete puede no corresponder con las imágenes. Meccano se reserva el derecho a suspender el sitio web www.meccano.com en cualquier momento. Un adulto debe revisar de forma periódica el juguete para asegurarse de que no supone un riesgo o peligro para el niño; si así fuera el caso, interrumpir su uso. Supervise a los niños mientras juegan con el producto.
- D** Entfernen Sie vor der Benutzung sämtliche Verpackungsmaterialien. Alle Informationen, Adressen und Telefonnummern bitte für mögliche Rückfragen aufbewahren. Der Packungsinhalt kann von den Bildern abweichen. Meccano behält sich das Recht vor, den Betrieb der Website www.meccano.com jederzeit einzustellen. Ein Erwachsener sollte regelmäßig sicherstellen, dass das Spielzeug keine Gefahr darstellt, und es gegebenenfalls entfernen. Kinder sollten beim Spielen beaufsichtigt werden.

- NL** Verwijder de verpakking voor gebruik. Bewaar deze informatie, adressen en telefoonnummers voor toekomstig gebruik. Inhoud kan afwijken van illustraties. Meccano behoudt zich het recht voor de website www.meccano.com wanneer gewenst buiten gebruik te stellen. Een volwassene dient dit speelgoed regelmatig te controleren op schade en gevaren. Ouderlijk toezicht is vereist als kinderen met dit speelgoed spelen.
- I** Rimuovere l'imballaggio prima dell'uso. Conservare informazioni, indirizzi e numeri di telefono per riferimento futuro. Il prodotto potrebbe essere differente dalle immagini. Meccano si riserva il diritto di rimuovere il sito www.meccano.com in qualsiasi momento. Il giocattolo deve essere periodicamente controllato da un adulto per prevenire eventuali danni o rischi; in caso di danno, sospendere l'uso. I bambini devono essere sorvegliati durante il gioco.
- P** Remova totalmente a embalagem antes de utilizar. Guarde estas informações, as moradas e os números de telefone para consulta futura. O conteúdo poderá ser diferente das ilustrações. A Meccano reserva-se o direito de descontinuar o site www.meccano.com a qualquer altura. Um adulto deve verificar o brinquedo periodicamente para garantir que ele não apresenta danos ou riscos. Se houver, é necessário que o brinquedo seja retirado de uso. Crianças devem ser supervisionadas enquanto brincam.
- GR** Πριν τη χρήση αφαιρέστε όλα τα υλικά της συσκευασίας. Διατηρήστε αυτές τις πληροφορίες, τις διευκρινίσεις και τους αριθμούς τηλεφώνου για μελλοντική αναφορά. Το περιεχόμενο ενδέχεται να διαφέρει από τις εικόνες. Η Meccano διατηρεί το δικαίωμα να διακόψει τη λειτουργία της ιστοσελίδας www.meccano.com ανά πάσα στιγμή. Ένας ενήλικας θα πρέπει να ελέγχει τακτικά αυτό το παιχνίδι και να διακόπτει τη χρήση του σε περίπτωση εντοπισμού βλαβών ή κινδύνων. Τα παιδιά θα πρέπει να παίζουν υπό επίτηρηση.

- S** Ta bort alla förpackningar före användning. Spara den här informationen, adresser och telefonnummer för framtida referens. Innehållet kan skilja sig från bilderna. Meccano förbehåller sig rätten att när som helst ta bort webbplatsen www.meccano.com. En vuxen ska regelbundet undersöka den här leksaken för att säkerställa att det inte finns några skador eller faror rörande den. Barn ska hållas under uppsikt när de leker.
- DK** Fjern al emballage før brug. Gem disse oplysninger, adresser og telefonnumre for fremtidig brug. Indholdet kan være forskelligt fra billederne. Meccano forbeholder sig ret til at nedlægge hjemmesiden www.meccano.com til enhver tid. En voksen bør jævnligt tjekke dette legetøj for at sikre, at det ikke er beskadiget eller udgør nogen fare, i så fald, stop brugen af det. Barn bør overvåges, når de leger med det.
- FIN** Poista kaikki pakkausmateriaali ennen käyttöä. Säilytä nämä tiedot, osoitteet ja puhelinnumerot tulevia tarpeita varten. Sisältö saattaa poiketa kuvista. Meccano pidättää oikeuden lakkauttaa sivuston www.meccano.com milloin tahansa. Aikuisen tulee säännöllisesti tarkistaa, että lelu ei ole vaurioitunut ja muuttunut vaaralliseksi. Jos näin on käynyt, lelu tulee poistaa käytöstä. Lasten tulee leikkiä vain aikuisen valvonnassa.
- R** Снимите все упаковочные материалы перед использованием. Запишите указанные на упаковке адреса и номера телефонов, чтобы у вас была возможность связаться с нами. Содержимое упаковки может отличаться от иллюстраций. Компания Meccano оставляет за собой право прекратить использование сайта www.meccano.com в любое время. Взрослым следует время от времени проверять игру и следить за тем, чтобы она не была сломана и не представляла опасности для ребенка. В противном случае не следует использовать. Во время игры за детьми следует присматривать.

- GB** ⚠ Warning! CHOKING HAZARD - Small parts.
- F** ⚠ Attention ! RISQUE D'ÉTOUFFEMENT - Contient de petits éléments.
- E** ⚠ Advertencia: PELIGRO DE ASFIXIA - Contiene piezas pequeñas. No conveniente para niños menores de 3 años.
- D** ⚠ Achtung: ERSTICKUNGSGEFAHR - Kleinteile.
- NL** ⚠ Waarschuwing: VERSTIKKINGSGEVAAR - Kleine onderdelen.
- I** ⚠ Attenzione: RISCHIO DI SOFFOCAMENTO - Pezzi piccoli.
- P** ⚠ Aviso: PERIGO DE ASFIXIA - Peças pequenas.
- GR** ⚠ Προειδοποίηση: ΚΙΝΔΥΝΟΣ ΠΝΙΓΜΟΥ — Μικρά μέρη.
- S** ⚠ Varning: RISK FÖR KVÄVNING - Små delar.
- DK** ⚠ Advarsel: KVAELNINGSFARE - Små dele.
- FIN** ⚠ Varoitus: TUKEHTUMISVAARA - Pieniä osia.
- R** ⚠ Осторожно! ОПАСНОСТЬ УДУШЬЯ - мелкие детали.



SPIN MASTER LTD., 450 FRONT STREET WEST, TORONTO, ON M5V 1B6 CANADA.
 Distributed in EU by SPIN MASTER INTERNATIONAL, S.A.R.L.,
 16 AVENUE PASTEUR, L-2310, LUXEMBOURG.
www.spinmaster.com
 Meccano : 363, avenue de Saint-Exupéry 62100 Calais - France



UK – 0800 206 1191, SERVICEUK@SPINMASTER.COM
FRANCE – 0800 909 150, SERVICEFR@SPINMASTER.COM
ESPAÑA – SERVICIO@SPINMASTER.COM
DEUTSCHLAND – 00800 0101 0222, KUNDENSERVICE@SPINMASTER.COM
SCHWEIZ – 0800 561 350 • ÖSTERREICH – 0800 29 72 67
NEDERLAND – 0800 022 36 83, KLANTENSERVICE@SPINMASTER.COM
BELGIË/BELGIQUE – 0800 77 688 • LUXEMBOURG – 800 28 044
ITALIA – 800 788 532, SERVIZIO@SPINMASTER.COM
MEXICO – 53.51.44.00
WWW.SPINMASTER.COM
NORTH AMERICA : 1-800-622-8339 customer care@spinmaster.com
AMÉRIQUE DU NORD :

TM & © 2015 MECCANO for packaging, instructions and models built with this set. TM & © 2015 MECCANO pour l'emballage, les notices et modèles de ce coffret. ® MECCANO is an exclusive trademark of MECCANO. Spin Master logo is a trademark of Spin Master Ltd. ® MECCANO est une marque de commerce exclusive de MECCANO. Le logo de Spin Master est une marque de commerce de Spin Master Ltd. All rights reserved. Tous droits réservés.
 T91668_0029_20069550_GML_IB_R1_W1_MEC_ATV